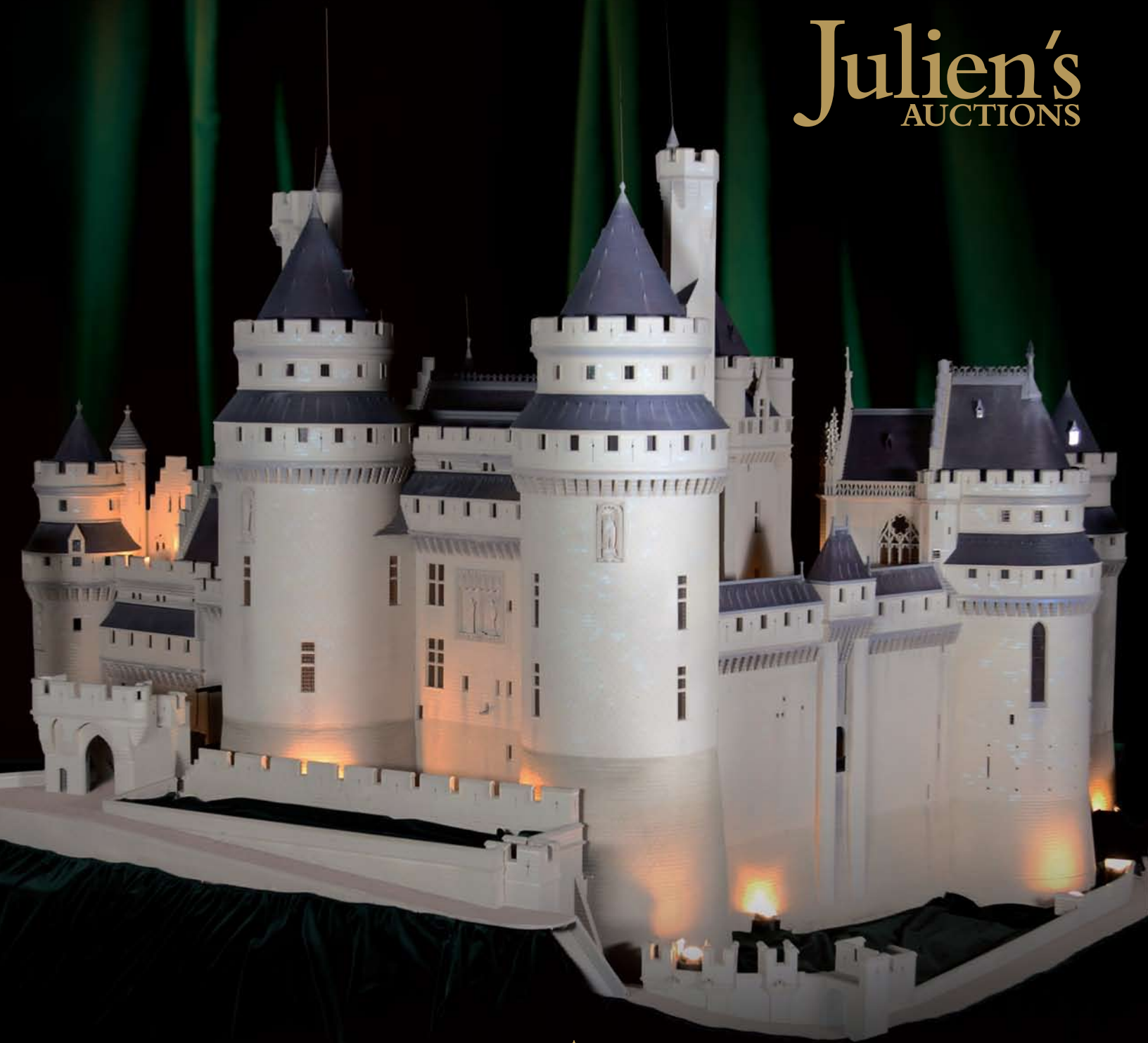


Julien's
AUCTIONS



THE COLLECTION OF THE KING OF POP

Michael Jackson

Amusements, Arcade Games & Entertainment

APRIL 24, 2009







THE COLLECTION OF THE KING OF POP

Michael Jackson

Julien's AUCTIONS

Public Exhibition

9900 Wilshire Boulevard, Beverly Hills, California 90210
Adjacent to the Beverly Hilton

April 14 – April 21, 2009

10:00 a.m. – 6:00 p.m. daily

\$20.00 per person for the Exhibition and Auction

Exhibition Designers: WRJ Design Associates, LLC

Live & Online Auction

9900 Wilshire Boulevard, Beverly Hills, California 90210
Adjacent to the Beverly Hilton

April 22, 2009

Session I, 9:00 a.m. *Garden Statuary & Outdoor Furniture*

Session II, 2:00 p.m. *Furniture & Decorative Arts*

April 23, 2009

Session III, 9:00 a.m. *Furniture & Decorative Arts*

Session IV, 2:00 p.m. *Antiques, Paintings & Fine Decorative Arts*

April 24, 2009

Session V, 9:00 a.m. *Amusements, Arcade Games & Entertainment*

Session VI, 2:00 p.m. *Amusements, Arcade Games & Entertainment*

April 25, 2009

Session VII, 9:00 a.m. *Memorabilia from the Life & Career of Michael Jackson*

Session VIII, 2:00 p.m. *Memorabilia from the Life & Career of Michael Jackson*

All times are Pacific Standard Time (PST).

the BEVERLY HILTON®

Located adjacent to the site of the Michael Jackson Exhibition and Auction, the Beverly Hilton (awarded the Mobil Four Star for the second consecutive year) is offering special room rates, packages, and VIP private bidding suites. For more information or reservations please visit www.beverlyhilton.com.

NOTE: No statements or descriptions of property condition have been included in the lot descriptions in this catalogue. To request a detailed condition report of any lot or lots in this catalogue, please email your request (including your contact information) to info@juliensauctions.com.

A portion of the proceeds
of this auction will benefit



MUSICARES®

Live Broadcast By



Auction Network is the live-bid-to-picture interactive auction entertainment network that offers audiences compelling interactive programming which merges the sport and spirit of live auction with the ability to watch, bid and win live, real-time, in H-D from anywhere in the world. Auction Network allows viewers to participate either live or through absentee bidding online at www.auctionnetwork.com



Front row left to right:
 Fran Campione, Darren Julien,
 Martin Nolan, Melanie Newman
 Back row left to right: Alex Saenz,
 Lindsey Karnopp, Megan Mahn,
 Michael Doyle, Hillary Ripps,
 Laura Woolley, Shaan Kokin
 Not pictured: Rebecca Markman,
 Rush Jenkins, Klaus Baer



DARREN JULIEN
 President / CEO, darren@juliensauctions.com

MARTIN J. NOLAN
 Executive Director, martin@juliensauctions.com

MEGAN MAHN
 Director of Special Projects, megan@juliensauctions.com

SHAAN KOKIN
 Creative Director, shaan@juliensauctions.com

HILLARY RIPPS
 Office Manager, hillary@juliensauctions.com

MELANIE NEWMAN
 Accounting, melanie@juliensauctions.com

MICHAEL DOYLE
 Administrator, michael@juliensauctions.com

FRAN CAMPIONE
 Executive Assistant, fran@juliensauctions.com

ALEX SAENZ
 Warehouse Manager, alex@juliensauctions.com

LINDSEY KARNOPP
 Photographer

LAURA WOOLLEY / The Collectors Lab
 Consultant, lwoolley@thecollectorslab.com

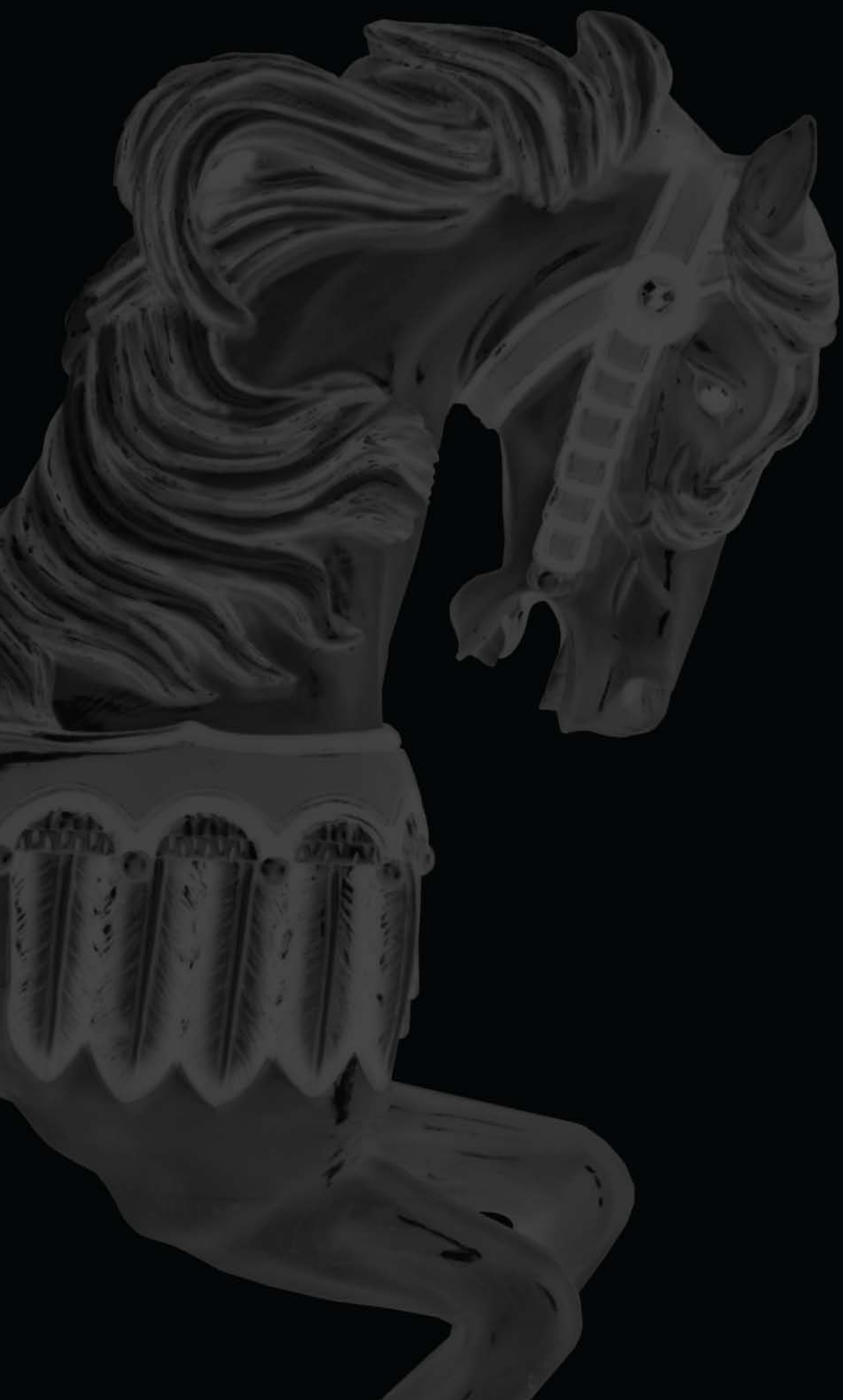
REBECCA MARKMAN / Antiques and Fine Art Appraisal Services
 Consultant, antiquesappraiser@cox.net

RUSH JENKINS and KLAUS BAER / WRJ Design Associates, LLC
 Exhibition Designers, wrjassociates@gmail.com

DANIEL KRUSE and KATHLEEN GUZMAN
 Auctioneers

Julien's
 AUCTIONS

P.O. Box 691789
 West Hollywood, California 90069
 Phone: 310-836-1818
 Fax: 310-827-2125
 Email: info@juliensauctions.com
 Web: www.juliensauctions.com
www.juliensauctions.co.uk





THE COLLECTION OF THE KING OF POP

Michael Jackson

Amusements, Arcade Games & Entertainment

April 24, 2009

9:00 a.m. (PST)

Session V, Lots 678 – 878



678

678

THE SIMPSONS PINBALL PARTY

Stern Pinball Inc., *The Simpsons* Pinball party, four-player pinball machine, 2002. Serial number 169730.

\$2,000 – 3,000



679

679

SPORTS SHOOTING USA

Sammy USA, *Sports Shooting*, two-player game, 2003.

73 ½ by 33 by 39 inches

\$700 – 900



680

680

THE LOST WORLD: JURASSIC PARK

Sega, *The Lost World: Jurassic Park*, upright, two-person arcade game, 1997. Serial number U0040460.

73 ½ by 32 by 43 inches

\$800 – 1,200



681

681

MEGATOUCH XL

Merit, Megatouch XL, extreme multi-game table top, video machine, 1998. Serial number 603046.

16 ½ by 20 by 19.5 inches

\$200 – 300



682

682

STREET FEVER BASKETBALL

Automated Street Fever basketball game featuring three different games, including 'rotating' hoop, and back and forward moving hoop. Adjustable hoop height eight to nine feet.

120 by 30 by 104 inches

\$2,000 – 3,000



683



684

**683
JAMBO! SAFARI**

Sega, Jambo! Safari sit-down driving simulation game, 1999. Serial number 9061323.

86 by 44 ½ by 84 ½ inches

\$1,000 – 1,500

**684
SUPER CHEXX HOCKEY**

Ice, Super Chexx bubble hockey arcade game, 2003. Serial number SCL03#0227.

60 by 30 by 54 inches

\$1,000 – 1,500



685

685

HOTFLASH AIR HOCKEY

Dynamo, Hot Flash air hockey table.

99 ½ by 51 ½ by 71 inches

\$2,000 – 3,000



686



687

686

POPSTAR PINBALL

TAB Austria, Popstar virtual pinball machine with plasma display, circa 2003.

\$300 – 500

687

SAN FRANCISCO RUSH

2049 Atari, San Francisco Rush 2049 arcade driving game, 1999.

\$800 – 1,200



688

688

CRAZY TAXI

Sega, Crazy Taxi III, High Roller simulated driving game, 2002. Serial number U0120022.

70 by 32 by 73 ½ inches

\$1,000 – 1,500

689

HOG WILD

Uniana, Hog Wild Chase Up!! arcade racing game, 2003. Serial number CHUS-0011.

74 by 30 ½ by 61 ½ inches

\$1000 – 1,500



689



690



691

690

F1 EXHAUST NOTE

Sega, F1 Exhaust Note, arcade driving simulation game with dual driver seats, 1991.

\$1,500 – 2,500

691

POLICE TRAINER 2 DELUXE

Phantom Systems, deluxe sit-down, team play Police Trainer 2, 2001. Serial number PT2 3000.

\$1,000 – 1,500



692

692

CRAZY TAXI III

Sega, Crazy Taxi III, High Roller
simulated driving game, 2002. Serial
number U0120304.

70 by 32 by 73 ½ inches

\$1,000 – 1,500



693

693
STAR TREK

Williams, *Star Trek: The Next Generation* four-player pinball machine, 1994. Serial number 53323429261.

75 by 29 by 58 inches

\$2,000 – 3,000



694

694
X-MEN

Capcom, *X-Men: Children of the Atom* upright two-player game, 1994. Serial number 1099L.

83 ½ by 32 by 41 inches

\$400 – 600



696

695
INDIANA JONES
THE PINBALL ADVENTURE

Williams, *Indiana Jones, The Pinball Adventure* four-player pinball machine, 1993. Serial number 53317160772.

75 ½ by 29 by 59 inches

\$2,500 – 3,500

696
TERMINATOR 3

Stern Pinball Inc., *Terminator 3: Rise of the Machines*, four-player pinball machine, 2003. Serial number 173892.

\$2,000 – 3,000

695



697

TOKYO COP

NAMCO, Deluxe cabinet Tokyo Cop Special Police Reinforcement, sit-down driving simulation game, 2003. Serial number TPDx0268.

85 by 48 by 83 ½ inches

\$3,000 – 5,000

697



698

**698
DARK STALKERS**

Capcom, Dark Stalkers multi-player arcade game, 1994. Serial number 305260.

72 ½ by 27 by 38 inches

\$800 – 1,200

**699
REVOLUTION X**

Midway, Revolution X upright two-player first person shooter game, featuring the band Aerosmith, 1994. Serial number 40019127.

80 by 27 by 37 inches

\$300 – 500

**700
MS. PACMAN / GALAGA**

Namco, Ms. Pacman and Galaga cocktail game table, 1982. Serial number 249.

29 by 27 by 37 inches

\$2,000 – 3,000



699



700



701

**701
HORSE RIDE**

Coin-operated charging black horse
kiddie ride. Model AMB.

89 by 57 by 26 inches

\$1,500 – 2,500



702

702

THE SIMPSONS BOWLING

Konami, *The Simpsons* Bowling upright four-player trackball game 2000. Serial number 42145.

\$1,000 – 1,500



703

703

THE SIMPSONS

Konami, *The Simpsons* upright four-player game, 1991. Serial number 072251.

\$1,200 – 1,500



704

**704
FORTUNE TELLER**

Coin-operated, female Fortune Teller in wooden cabinet with hinged glass door.

64 ½ by 31 by 21.5 inches

\$1,000 – 1,500



705

**705
GRANDMOTHER PREDICTIONS**

Coin-operated, Grandmother Predictions fortune teller in wooden cabinet.

79 ½ by 25 by 23 inches

\$1,500 – 2,500



706

706

SAMMY USA SPORTS ARENA

Sammy USA, the original coin-operated Sports Arena featuring eight stocked prize carousels, named "Operators' Choice 1998" by the readers of Play Meter Magazine. Serial number 5A06046.

73 ½ by 33 by 39 inches

\$600 – 800



707

707

ZOLTAR THE FORTUNE TELLER

Coin-operated arcade fortune-telling machine with animatronic Zoltar, that issues one of twenty-three fortunes which print out of the front of the machine. Detailed modeling of the figure housed in a locked oak cabinet.

77 by 25 by 27 inches

\$2,000 – 3,000



708

708
LETHAL ENFORCERS

Konami, Lethal Enforcers multi-player shooting game, 1992. Model number 191251.

72 by 28 ½ by 37 inches

\$700 – 900



709

709
LARA CROFT

First edition life-size Lara Croft Tomb Raider statue with articulating arms.

69 by 37 inches

\$400 – 600



710

710
WAR GODS

Midway, War Gods, upright dual-player fighting arcade game, 1996.

\$500 – 700



711



712

**711
JUMBO**

Glendale, Jumbo, coin-operated prize machine.

66 by 26 by 22 inches

\$200 – 300

**712
PRINT CLUB 2**

Sega, Print Club 2, arcade photobooth, 1997. Serial number 848196.

\$400 – 600



713

**713
SUPER STREET FIGHTER II**

Capcom, Super Street Fighter II The New Challengers, multi-player upright arcade game, 1993. Serial number 21900255228.

75 by 27 by 36 inches

\$800 – 1,200



714

714
LITTLE RED CORVETTE

Automatic Toys Modena, Little Red Corvette and Gilbarco fuel pump in the style of a vintage Texaco pump kiddie ride. Serial number 2838.

\$2,000 – 3,000



715

715

SEGA R-360

Sega. R-360 Servo Drive Moving System, flight simulation arcade game with original plexiglass safety barrier and attendant station, 1991.

\$4,000 – 6,000



716



717



718

716

LETHAL ENFORCERS

Konami, Lethal Enforcers multi-player shooting game, 1992. Model number 191251.

72 by 28 ½ by 37 inches

\$700 – 900

717

NBA HANG TIME

Midway, NBA Hang Time, four-player upright arcade game, 1996. Serial number 40023600431.

73 ½ by 37 by 42 inches

\$800 – 1,200

718

HARLEY-DAVIDSON & L.A. RIDERS

Sega, Harley-Davidson & L.A. Riders upright cabinet, motorcycle simulation game, 1998.

76 ½ by 30 by 65 inches

\$1,500 – 2,500

719

POLAROID PHOTO BOOTH

Capcom, Polaroid Instant Memories photobooth circa 1993.

\$3,000 – 5,000



719



720

720

THE PORTRAIT STUDIO

Fantasy Entertainment, Portrait Studio, black and white photo booth machine with four portrait options: sharp pencil, soft pencil, charcoal, pen, and ink.

87 by 64 by 35 inches

\$2,000 – 3,000



721
GALAXY FORCE

Sega, Galaxy Force Version II, flight simulation first-person shooter arcade pod, 1988. Serial number 270366.

\$1,500 – 2,500



722

722

WWF ROYAL RUMBLE

Sega, WWF Royal Rumble, standard cabinet, four-player arcade game. Serial number 0098709.

77 ½ by 68 by 39 inches

\$1,500 – 2,500



723

**723
OSCAR'S WILD RIDE
GUMBALL MACHINE**

Creative Coin Contraptions, Utah, kinetic gumball machine designed by Ross Mann, debuted in 1995. Serial number 1907.

\$800 – 1,200



724

**724
ZIGGY THE CLOWN**

Ziggy the Clown, talking prize vending machine.

\$200 – 300



725

**725
NINTENDO 64**

Nintendo 64 gaming system and original store display rack with two gaming controls and built-in speakers, no display present, 1996.

\$100 – 150



726

**726
3DO GAMING SYSTEM**

Panasonic, REAL 3DO Interactive Multiplayer, game system and original store display rack. Produced in 1994, the system was declared *Time* magazine's product of the year. No monitor present.

\$100 – 150



727

**727
SONY PLAYSTATION**

Sony, Sony Playstation gaming system and original store display rack with two gaming controls, built-in speakers and display monitor, 1994.

\$200 – 300



728



729

728
CLOWN AROUND
Clown Aaround, vintage token-operated arcade ticket-dispensing game.
\$100 – 150

729
SMASHING DRIVE
Gaelco, Smashing Drive, 2000. Serial number SMC0666.
\$300 – 500



730

730
SERGEANT MAJOR
Mayoni, Sergeant Major, palace guard dual-compartment prize vending machine.
\$100 – 150



731

731

NINTENDO VIRTUAL BOY

Nintendo, Virtual Boy 3D portable gaming system and original store display rack.

This was the first home gaming system to feature true 3D graphics through the use of a parallax head set, 1995.

\$100 – 150



732

732

BLITZ 99

Midway, NFL Blitz 99, upright showcase model, four-player game, 1998. Serial number 43384400305.

79 by 43 by 66 inches

\$700 – 900



733

733
ALPINE RACER 2

Namco, Alpine Racer 2 skiing simulation game, 1996. Serial number APM02194.

\$1,500 – 2,500



734

734

HIPHOPMANIA COMPLETE MIX 2

Konami, HipHopMania Complete Mix 2, with dual turn-table controllers, 2000. Serial number 858200979.

\$400 – 600



735

735

DIGITAL THUNDER

NSM, Digital Thunder, 100 compact disc jukebox. Serial number 6004480234N.

\$400 – 600

“I love toys and gadgets. I like to see the latest things manufacturers have come out with. If there’s something really wonderful, I’ll buy one.”

Michael Jackson



736

**736
CRAZY TAXI**

Sega, Crazy Taxi, simulated driving game, 1999.

80 by 30 by 55 inches

\$1,000 – 1,500



737

**737
ULTRACADE**

Quantum 3D, UltraCade, multi-game upright arcade system, 1998.

77 ½ by 29 by 42 ½ inches

\$300 – 500



738

738

MOCAP BOXING

Konami, Mocap boxing, full-body movement arcade game, incorporating motion sensor technology, 2001. Serial number A29251.

88 by 47 by 63 ½ inches

\$2,000 – 3,000



739

739
STRIKER XTREME

Stern Pinball Inc., Striker Xtreme four-player pinball machine, 2000. Serial number 152533.

\$800 – 1,200



740

740
TIME KILLERS

Strata, Time Killers, upright dual-player arcade game, 1992.

\$200 – 300



741

741
SATURN

Sega, Saturn gaming system and original store display rack with single gaming controller, built-in speakers and display, 1995.

\$100 – 150



742

**742
KARATE CHAMP**

Data East, Karate Champ, upright arcade game, one of the first fighting titles ever produced, 1984.

\$400 – 600

**743
SUPER NEO 29**

SNK, Super Neo 29, upright multi-game arcade game, 1997. Serial number SN29-24A.

56 by 29 by 35 inches

\$500 – 700

**744
CRUIS'N EXOTICA**

Midway, Cruis'n Exotica simulated driving game, 2000. Serial number 44372405623.

\$1,500 – 2,000



743



744



745

**745
STRIKE FIGHTER**

Sega, Strike Fighter, flight simulation game, 2000. Serial number 1028669.

73 ½ by 33 ½ by 60 ½ inches

\$1,500 – 2,500



746



747

746 MEGATOUCH MAXX

Megatouch MAXX Ruby Edition from Merit Entertainment, touch screen, multi-game table top, video machine featuring over 75 games, 1998, serial number 623557.

\$300 – 500

747 VIRTUA RACING

Sega, Virtua Racing driving simulation game with deluxe cabinet and wide vision screen, 1992. Serial number 00461579.

\$1,500 – 2,500



748

RIPLEY'S PINBALL

Stern Pinball Inc., Ripley's Believe It Or Not! four-player pinball machine, released 2004. Serial number 181018.

74 by 28 by 54 inches

\$1,000 – 1,500

749

AUSTIN POWERS PINBALL

Stern Pinball Inc., *Austin Powers* four-player pinball machine, released 2001. Serial number 164675.

75 by 27 ½ by 54 inches

\$1,000 – 1,500



750

**750
ULTRACADE**

Quantum 3D, UltraCade, multi-game upright arcade system, 1998. Serial number 46976.

73 by 27 ½ by 38 inches

\$200 – 300



751

**751
NSM JUKEBOX**

NSM, compact disc jukebox, with phoenix design, circa 2005. Serial number 60371522.

68 by 37 by 25 inches

\$2,000 – 3,000



752



753

752

SAN FRANCISCO RUSH 2049

Atari, San Francisco Rush 2049 arcade driving game, 1999.

\$800 – 1,200

753

EIGHTEEN WHEELER

Sega, Eighteen Wheeler, truck driving simulation game, 1999. Serial number U0098403.

\$1,000 – 1,500



754

754
X-MEN

Konami, *X-Men*, upright six-player arcade game, 1992. Serial number 10292UPC.

\$1,500 – 2,500



755

**755
SPORTS JAM**

Sega, Sports Jam upright arcade game, featuring eight different sports, 1993. Serial number 2080920.

87 by 36 ½ by 40 ½ inches

\$700 – 900



756

**756
LETHAL ENFORCER**

Konami, Lethal Enforcers multi-player shooting game, 1992. Model number 191251.

72 by 28 ½ by 37 inches

\$700 – 900



757

**757
BATMAN**

Atari, Batman upright dual-player arcade game, 1990.

\$500 – 700



758
LUIGI'S CORNER
 CCI, Luigi's Corner arcade redemption machine.
 \$300 – 500

759
ROBOVEND
 Zord, Robovend, dual-compartment vending machine with voice interaction.
 58 by 24 by 19 inches
 \$100 – 150

760
LAX ROTARY MERCHANDISER
 Noel, LAX Rotary Merchandiser, four-player redemption game. Serial number 8798.
 \$500 – 700



761

**761
GUITAR FREAKS**

Konami, Guitar Freaks, upright arcade game with dual game controllers modeled after Fender electric guitars, 1999.

\$1,500 – 2,500



762

**762
TEKKEN 2**

Namco, Tekken 2, multi-player upright arcade game, 1995. Serial number M450.

73 by 27 by 33 inches

\$800 – 1,200



763

763

STAR WARS RACER

Sega, *Star Wars Racer* standard mini deluxe cabinet style, 2000. Serial number U0097592.

76 by 35 by 85 ½ inches

\$2,000 – 3,000



764

BUCKING BRONCO

Vintage cast-metal bucking bronco kiddie ride with leather saddle.

\$200 – 300



765

765

THE SANDS SLOT MACHINE

Slot machine from The Sands Hotel in Las Vegas, one of the most famous hotels on the strip, open from 1952 until it was razed in 1996.

44 by 20 by 18 inches

\$300 – 500



766

766

MILLS BLUE BELL HI TOP SLOT

Bill Harris hand-carved and painted, kiln-dried basswood Mexican bandito mounted with a 5 cent Mills Hi Top slot machine.

\$800 – 1,200



767

767
DIG DUG

Namco, Dig Dug, upright arcade game, 1982.

\$600 – 800



768

768
CRYSTAL CASTLES

Atari, Crystal Castles, upright arcade game, 1983.

\$300 – 500



769

769
SOUL CALIBUR

Namco, Soul Calibur, upright dual-player arcade game, 1998.

\$400 – 600



770



771

**770
SUNSET RIDERS**

Konami, Sunset Riders, arcade cocktail table western-themed run and gun game, 1991.

\$500 – 700

**771
DANGER ZONE**

Cinematronics, Danger Zone, single-player flight shooter game, 1986.

\$500 – 700



772

**772
DONKEY KONG**

Nintendo, Donkey Kong, upright arcade game, one of the first platform genre games, 1981.

\$800 – 1,200



773

773

TERMINATOR 2

Midway, *Terminator 2: Judgment Day*, upright arcade game with dual machine gun controllers, 1991.

\$800 – 1,200



774

774

ALIENS

Konami, *Aliens*, upright dual-player arcade game, 1990.

\$700 – 900



775



776

775

NBA SHOWTIME

Midway, NBA Showtime, NBA on NBC, basketball arcade game, 1998. Missing controller panel.

\$200 – 300



777

777

CART FURY

Midway, Cart Fury: Championship Racing, sit-down arcade racing game, 2000. Serial number 43390406640.

76 by 30 1/2 by 63 inches

\$1,500 – 2,500

776

FROGGER

Konami, Frogger upright arcade game, 1981.

\$400 – 600



778

778

MANX SUPER BIKE

Sega, Manx Super Bike, simulated motorcycle racing game with twin cycles for two players, 1995. Serial number 90027746.

\$1,500 – 2,500



779



780



781

779

BASKETBALL

Atari, Basketball upright black and white graphic arcade game with dual-player trackball controls, 1979.

70 by 29 1/2 by 79 inches

\$400 – 600

780

PONY MARK IV

Jaleco, Pony Mark IV with candy cabinet. Serial number 965726.

54 by 34 inches

\$200 – 300

781

MS. PACMAN

Midway Bally, Ms. Pacman, upright arcade game, 1981.

\$1,000 – 1,500



782

782
MORTAL KOMBAT

Midway, Mortal Kombat, upright dual-player arcade game, 1992.

\$400 – 600



783

783
NEO GEO MVS

SNK, Neo Geo MVS, cartridge based upright dual-player arcade game, 1989.

\$100 – 150



784



785



786

784
BLITZ 99

Midway, NFL Blitz 99, upright arcade game, 1998. Missing game controller panel.

79 by 43 by 66 inches

\$100 – 150

785
CAVEMAN NINJA

Data East, Caveman Ninja, upright dual-player arcade game, 1991.

\$300 – 500

786
SUPER MARIO BROTHERS

Nintendo, Super Mario Brothers, dual-player upright arcade game, 1985.

\$400 – 600



787

787

BEACH HEAD 2002

Global VR Vortek, Beach Head 2002 military simulation upright game. Serial number GVRV 200866.

92 by 28 ½ by 65 inches

\$1,500 – 2,000



788

788

MARVEL VS. CAPCOM

Capcom, Marvel vs. Capcom, Clash of Super Heroes, multi-player upright arcade game, 1998. Serial number 4.46161E+11.

73 by 28 by 42 inches

\$800 – 1,200



789

789

VIRTUA TENNIS 2

Sega, Virtua Tennis 2 upright arcade game
2001. Serial number U0106289.

\$800 – 1,200



790

790

TOP SKATER

Sega, Top Skater skateboard simulator
arcade game, 1998. Serial number
43384400305.

88 by 45 by 107 inches.

\$2,000 – 3,000



791



792

791
THE SIMPSONS

Konami, *The Simpsons* upright four-player game, 1991.

71 by 38 by 42 inches

\$1,200 – 1,500

792
SUPER NINTENDO

Super Nintendo Entertainment System and original store display rack with two gaming controls and built-in speakers and display, 1991.

81 by 36 by 47 ½ inches

\$200 – 300



793

793

DANCE DANCE REVOLUTION

Konami, Dance Dance Revolution, arcade game with dual-player dance pads, 1992. Serial number 845202229.

\$1,000 – 1,500



794

794

SEGA GENESIS GAME DISPLAY

Sega Genesis Game Gear gaming system and original store display rack with one gaming control, built-in speakers, and display monitor, 1989.

80 by 23 ½ by 47 inches

\$200 – 300



795

795

SEGA DREAMCAST

Sega Dreamcast gaming system and original store display rack with two gaming controls and built-in speakers and display, 1999.

54 by 24 by 19 ½ inches

\$200 – 300



796

796
FRENZY EXPRESS

Uniana, Frenzy Express arcade dance game with no dance pad, 2001, serial number FXUS-002360.

74 ½ by 32 ½ by 49 inches

\$100 – 150



797

797
NEED FOR SPEED

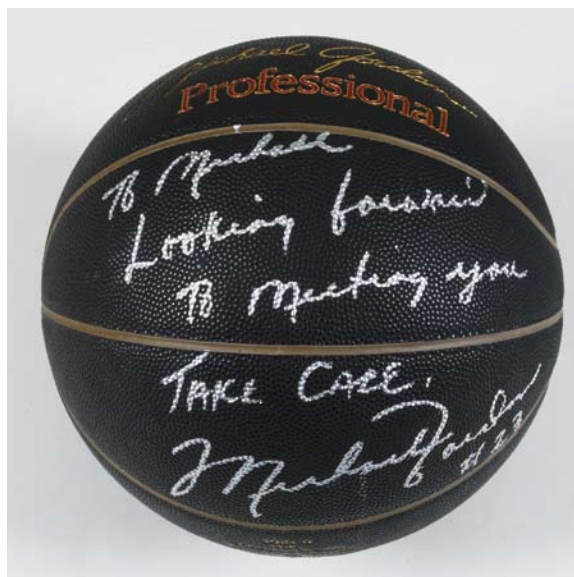
Global VR, EA Games, Need for Speed driving arcade game, 1994, serial number GVRNFS100135.

76 by 33 ½ by 59 inches

\$500 – 700



798



799



800

798

NASEEM HAMED CAPE

Framed faux-leopard cape from the British boxer and former Bantamweight and Featherweight champion, framed with a signed photo of the boxer and a plaque reading "Designed exclusively for Michael Jackson from one legend to another Prince Naseem Hamed W.B.O. World Featherweight Champion."

38 ½ by 57 ½ inches

\$100 – 150

799

MICHAEL JORDAN-INSCRIBED BASKETBALL

Wilson "Michael Jordan" professional black basketball inscribed by Jordan to Michael Jackson in silver sharpie: "To Michael Looking forward to meeting you Take Care, Michael Jordan #23." In Plexiglass display container.

10 by 10 by 10 inches

\$800 – 1,200

800

BASKETBALL FIGURE

Life-size figure of a child playing basketball in a Phoenix Suns basketball uniform.

68 by 14 by 21 inches

\$80 – 120



801

801

GEMFIRE JUKEBOX

NSM, Gemfire, jukebox with a 100 CD capacity on stand with two audio components, two front and six satellite speakers, and a subwoofer.

\$1,000 – 1,500



802

802
BATMAN STATUE

Life-size limited-edition statue of Batman mounted to a base with a plaque reading "Batman & Robin 10 of 500 Limited Edition Display Figure."

90 by 33 by 12 inches

\$800 – 1,200



803

803
BATMAN STATUETTE

Painted, molded resin statuette of Batman housed in a Plexiglass cover.

19 inches

\$60 – 80



804

**804
BATMAN STATUETTE**

Small-scale model of Batman leaping from the ledge of a building in *Batman Forever*.

9 ½ by 7 by 7 inches

\$80 – 120

**805
MICHAEL JACKSON
BATMAN FIGURE**

Life-size replica of Batman and his complete molded rubber costume mounted to a base. The Batman suit is fitted over a life-size replica of the likeness of Michael Jackson.

74 ½ by 33 by 20 inches

\$200 – 300



805



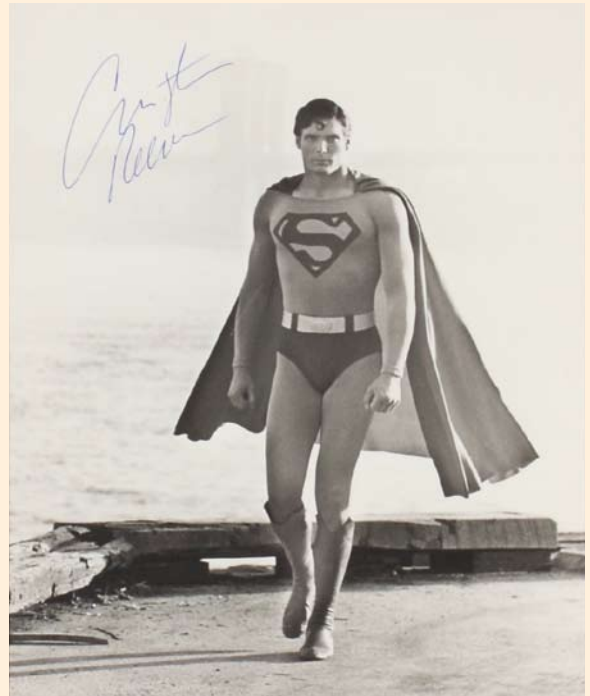
806

806
SUPERMAN STATUE

Larger-than-life molded figure of Superman mounted to a base with a plaque reading "Superman Limited Edition display figure 492 of 500."

81 by 45 by 14 inches

\$1,000 – 1,500



807

807
CHRISTOPHER REEVE-SIGNED PHOTO

Elaborately framed black and white 8x10 photograph of Christopher Reeve as Superman, signed in blue pen and framed together with cartoon images of Superman.

22 by 29 inches including frame

\$200 – 300



808

808

MARVEL UNIVERSE PRINT

A 1988 framed poster print featuring all of the Marvel Comics characters.

53 by 53 inches

\$100 – 150



809

809

ALEX ROSS SIGNED PRINT

Print of the opening sequence from the groundbreaking graphic novel *Superman: Peace On Earth*, signed in pencil "Alex Ross" and numbered "34/350."

27 ½ by 35 ½ inches

\$150 – 200



810

810

ASTROSCAN TELESCOPE

Edmund Scientific Astroscan beginner telescope on stand.

18 ½ by 10 ½ inches

\$80 – 120



811

**811
RANDY BOWEN
CAPTAIN AMERICA**

Original signed and numbered Randy Bowen polychrome bronze statue of Captain America on marble base, numbered "28/100."

14 ¼ by 14 ½ inches

\$800 – 1,200



812

**812
RANDY BOWEN SPIDER-MAN**

Original signed and numbered Randy Bowen polychrome bronze statue of Spider-man on marble base, signed "1997 Marvel 48/100."

10 ½ by 8 ½ inches

\$800 – 1,200



813

813

RANDY BOWEN HULK

Original signed and numbered Randy Bowen polychrome bronze statue of The Hulk on marble base, signed "1997 Marvel 49/100."

13 by 15 by 9 inches

\$800 – 1,200



814

814
LIFE-SIZE SPIDER-MAN STATUE

Molded plastic figure of Spider-Man with cloth costume on metal stand with armature. Plaque reads, "Spider Man Limited Edition Life Size Replica Blockbuster 2215/4600."

67 by 26 by 27 inches

\$300 – 500



815

815
SPIDER-MAN SIGN

Illuminated Plexiglass sign in the form of a crouching Spider-Man.

20 by 84 by 4 3/4 inches

\$100 – 150



816

816
SPIDER-MAN LIFESIZE FIGURE

A hand-carved and painted wooden life-size figure of Spider-Man. The entire statue is carved from pieces of raw tree lumber and hand painted.

69 1/2 by 18 by 20 inches

\$700 – 900



817

817

JOHNNY DEPP PROP "SCISSORHANDS"

20th Century Fox, 1990. A pair of the prop "scissorhand" gloves that Johnny Depp wore as he portrayed the title character in Tim Burton's *Edward Scissorhands*. Leather and nylon gloves with prop scissors, knives, cutting shears, and pliers for "fingers," these costume pieces came directly from Stan Winston, the visual effects artist for the film. They are displayed in a Plexiglass box over black wooden base with a plaque reading "Stan Winston Studios Scissorhands worn by Johnny Depp." Jackson worked closely with Stan Winston, who directed his 1997 short film *Ghosts*.

24 by 24 by 12 1/2 inches

\$4,000 – 6,000



818

818

ELVIS STATUE

Life-size figure of Elvis Presley sitting on a bar stool playing the guitar. The statue has been inscribed by Sam Phillips in black Sharpie, "If I can only find a white man with a black mans sound, I could make a million dollars... Sun Record [sic]."

70 by 36 by 30 inches

\$400 – 600

819

LIFE-SIZE SECURITY GUARD

Life-size figure of a security guard with glass eyes, hat, white shirt, black pants with braided black leather belt, and a "Museum Guard" patch on arm.

69 by 11 by 19 inches

\$300 – 500

820

MARILYN MONROE STATUE

Painted fiberglass figure of Marilyn Monroe in her famous pose over a New York subway grate from *The Seven Year Itch*.

66 by 48 by 31 inches

\$300 – 500



820



821

**821
BRUCE LEE STATUE**

Life-size custom statue of Bruce Lee with nunchucks and costumed in black pants, sash, and hat.

69 by 46 by 20 inches

\$400 – 600



822

**822
RED RANGER STATUE**

Life-size Red Ranger from the *Power Rangers* series mounted to a base with a plaque reading "Power Rangers Wild Force Red Ranger Collectible Replica produced by Idea Planet Inc."

70 by 33 by 12 inches

\$400 – 600



823

823
E.T. STATUE

Custom E.T. figure housed in a Plexiglass container on a wooden base decorated with fall leaf motif. E.T. is wearing a plaid flannel shirt with R2-D2 and C-3PO button.

41 ¾ by 26 by 26 inches

\$600 – 800



824

824
E.T. TOY CHEST

A hollow molded plastic figure of E.T. with a magnetic hinged door on back to reveal storage space.

38 by 21 by 15 inches

\$200 – 300



825

825

ALIEN PROP

Foam-rubber figure of an alien enclosed in a half-cylinder tube with faux alien markings along the top edge; unknown production. Pencil inscription with illegible signature on back reads "Little Michael breath smell like flowers."

60 by 23 ½ by 12 inches

\$80 – 120



826

826

TYRANNOSAURUS REX HEAD

Molded plastic head and neck of a T-Rex fitted with a battery-operated speaker mounted inside the head.

27 by 21 by 11 inches

\$80 – 120



827

827

DINOSAUR STATUETTE

Painted, sculpted fiberglass statuette of a dinosaur in three pieces with glass eyes and a plaque reading "Tyrannosaur Juvenile Late Cretaceous Period."

51 by 34 by 40 inches

\$500 – 700



828, detail



828

828

DARTH VADER LEGO STATUE

Life-size replica of Darth Vader standing over seven feet tall, made of LEGOs over a steel frame. Comprised of seven separate pieces (including a cloth cape) which assemble to create a larger-than-life figure. When turned on, the figure breathes heavily in between reciting eight different lines of dialogue from the film, among them "I've been waiting for you, Obi-Wan; we meet again at last," "You have failed me for the last time," and "He will join us or die, Master." A replica light saber also illuminates in red.

86 by 36 by 17 inches; light saber, 55 inches

\$6,000 – 8,000

829

BOBA FETT STATUE

Life-size limited-edition statue of Boba Fett mounted to a base with a plaque reading "Limited Edition 125 As seen in *Star Wars: Return of the Jedi*."

76 by 35 by 24 inches

\$800 – 1,200



829



830

830
DARTH VADER BUST

Illusive Originals bust of Darth Vader mounted to a base with stand for separate helmet. Plaque on base reads "Darth Vader reveals Anakin Skywalker 417 of 9500 From The Lucasfilm Archive Collection."

25 by 34 by 19 inches

\$400 – 600

831
JABBA THE HUTT STATUETTE

Small-scale model of Jabba the Hutt on a wooden base with a plaque reading in part "1429 of 5000."

15 by 29 ½ by 16 inches

\$100 – 150



831



832



833



834

832

EMPEROR PALPATINE BUST

Small-scale bust of Emperor Palpatine mounted to a base reading in part "646 / 2500 Legends in 3 dimensions."

9 by 5 inches

\$80 – 120

833

DARTH VADER STATUETTE

Small-scale model of Darth Vader mounted to a wooden base.

17 by 12 by 8 inches

\$20 – 40

834

YODA STATUE

Limited-edition statue of Yoda mounted to a wooden base with a plaque reading in part "2469 of 9500."

26 by 17 by 16 inches

\$300 – 500



835

835

HAN SOLO IN CARBONITE

Life-size replica of Han Solo frozen in Carbonite from *The Empire Strikes Back*. Created in a limited quantity by Illusive Concepts, this piece is numbered 1474 of 2500.

80 by 32 by 9 inches

\$800 – 1,200

836

R2-D2 STATUE

Life-size replica of famed *Star Wars* robot R2-D2 from Lucasfilm Ltd., 1999. The figure has an electric light to illuminate from within.

40 by 28 by 27 inches

\$700 – 900



836



837

837

C-3PO STATUE

Life-size limited-edition replica statue of C-3PO on a base with plaque reading "C-3PO Limited Edition replica 50 as seen in the *Star Wars* Trilogy."

74 by 35 inches

\$1,000 – 1,500



838



839

838 ROYAL HORSE GUARDS MILITARY UNIFORM

Mannequin fitted with a full British military uniform for one of the Royal Horse Guards, a regiment that makes up part of the Household Cavalry. This uniform includes nickel, silver, and brass-mounted parade helmet with red horsehair plume, plated steel cuirass with brass mounts and ornate shoulder straps, blue Household Cavalry tunic with gold-roped shoulder boards, black leather riding boots with spurs, white leather cross belt, white jodhpurs, and gauntlets.

84 inches

\$1,000 – 1,500



839

**PLATED BRASS CUIRASS AND
NICKEL, SILVER, AND BRASS-
PLATED PARADE HELMET**

From the British Household Cavalry.
Helmet with white horsehair plume
contains the motto "Honi soit qui mal y
pense."

Cuirass, 24 by 14 by 6 inches; helmet
height, 17 inches

\$400 – 600

840

LIFE GUARDS MILITARY UNIFORM

Mannequin fitted with a full British
military uniform for one of the Life
Guards, a senior regiment in the
British army that makes up part of the
Household Cavalry. This uniform includes
nickel, silver, and brass-mounted parade
helmet with white horsehair plume,
plated steel cuirass with brass mounts
and ornate shoulder straps, Household
Cavalry tunic with gold-roped shoulder
boards, black leather riding boots with
spurs, white leather cross belt, white
jodhpurs, gauntlets, sword with scabbard,
and a bugle with royal banner.

80 inches

\$1,500 – 2,000



840



841, partial



842

**841
SET OF THIRTY-THREE
MINIATURE CAVALRY FIGURINES**

Toy soldiers on horseback in military dress.

Height, 3 $\frac{3}{4}$ inches

\$200 – 400

**842
MARBLE CHESS SET**

With parcel-gilt and silver chess pieces.

21 $\frac{1}{2}$ by 21 $\frac{1}{2}$ inches

\$300 – 500

**843
MONUMENTAL MARBLE
AND PARCEL-GILT CHESS SET**

Resting on a marble chess table supported by four parcel-gilt horses on marble pillars.

\$2,000 – 3,000



843



843, detail



843, detail



844

**844
SUIT OF ARMOR**

Full display suit of armor made in Toledo, Spain, of burnished steel. On a wooden base and holding a sword.

Height, 76 inches

\$1,000 – 1,500



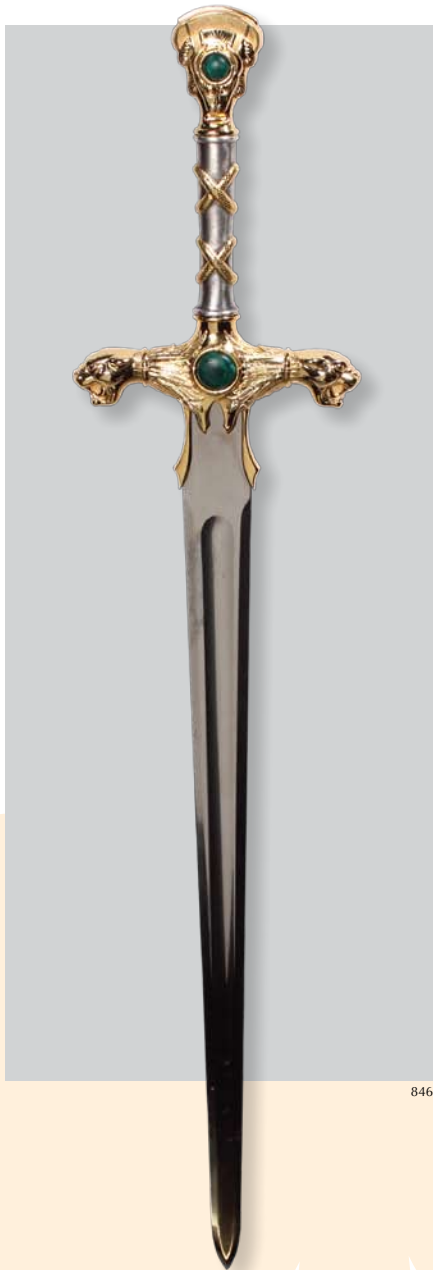
845

**845
LIFE GUARDS MILITARY HELMET**

Nickel, silver, and brass-mounted parade helmet with white horsehair plume. The British military helmet is for one of the Life Guards, a senior regiment in the British army that makes up part of the Household Cavalry.

Height, 15 inches

\$200 – 300



846

846

CONAN THE BARBARIAN SWORD

Featuring a gilt-medal handle with green jewels.

Height, 52 inches

\$50 – 100

847

SUIT OF ARMOR

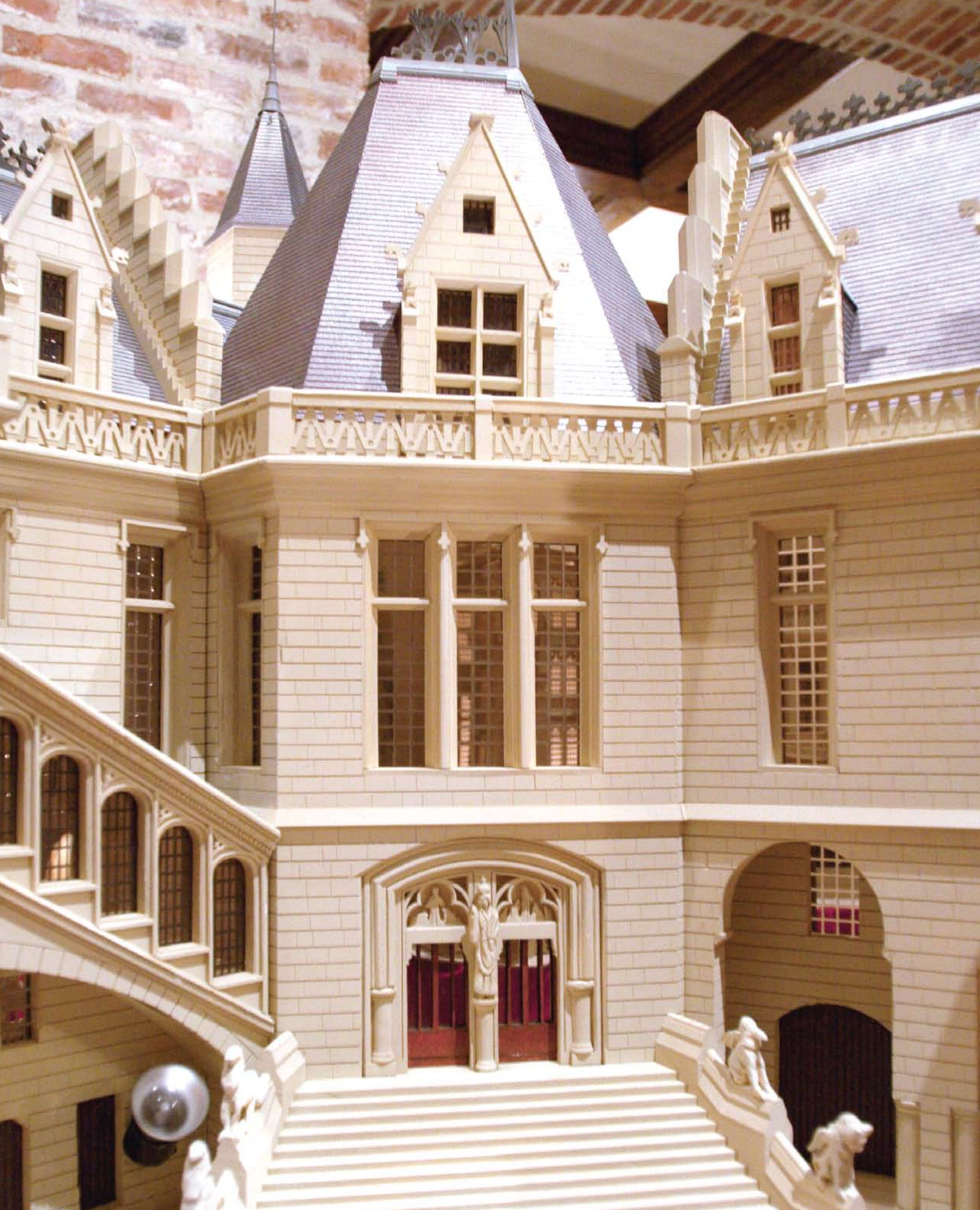
Full display suit of armor with chain mail. Freestanding on a white stone base.

Height, 78 inches

\$1,000 – 1,500



847





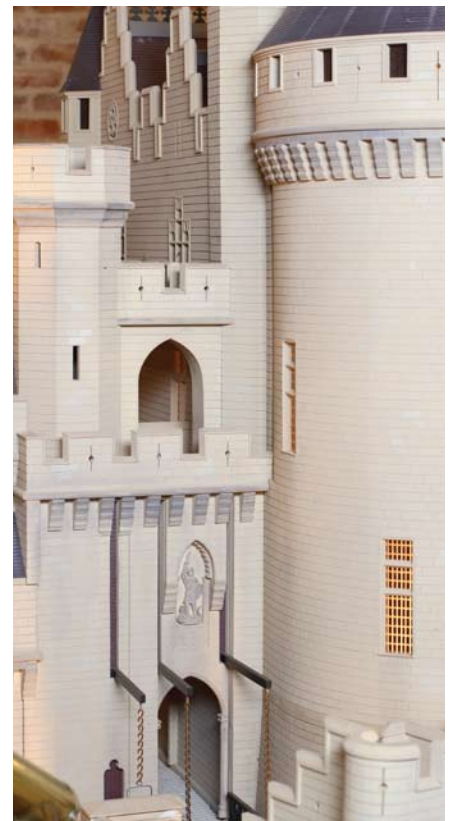
848

848 MONUMENTAL MODEL OF THE CASTLE OF PIERREFONDS

Replica of a historic French castle which still stands north of Paris. Together with a reproduction photograph of the castle of Pierrefonds shown in the above photo (29 by 36 inches framed).

106 by 132 by 144 inches

\$2,000 – 4,000



848, detail



849, detail



849, interior



849

849
1988 LINCOLN TOWN
CAR LIMOUSINE

VIN: 1LNBM81F9KY607464

Founded in 1979, DaBryan Coach Builders of Missouri has been awarded the distinction of Quality Vehicle Modifier by the Ford Corporation and Cadillac Master Coachbuilder by General Motors. This focus on product quality and customer service has made them one of the most desirable limousine manufacturers in the country. Jackson's limousine is a 70-inch model equipped with a 5.0-liter V-8 engine, automatic transmission, leather interior, custom sound system with two built-in Sony televisions, car phone, bar, sunroof, and dividing window. There is ample room for six passengers to ride comfortably in this extremely low-mileage limousine that is in near-perfect condition.

\$4,000 – 6,000



849, interior



850, detail



850, interior



850

850
1990 ROLLS-ROYCE SILVER SPUR II
TOURING LIMOUSINE

VIN: SCAZN02D6LCX31227

The Silver Spur II debuted in 1989. The line was produced from 1989 to 1993, during which time 1,658 were manufactured by hand in Crewe, England. The Silver Spur is the long-wheel-based counterpart to the Silver Spirit. These were the first Rolls-Royces with standard ABS braking system and fuel injection. The engine is a 6.75-liter V-8 with a 4-speed automatic transmission. This was also the first year that Rolls-Royce used an aluminum-alloy wheel. It is equipped with all the amenities that one expects from Rolls-Royce, including Connolly leather and walnut interior that seats six passengers comfortably.

\$40,000 – 60,000



850, interior



851, detail



851, interior



851

851

**1999 ROLLS-ROYCE SILVER
SERAPH LIMOUSINE**

VIN: SCALA61EXXCX01412

Rolls-Royce is the pinnacle of luxury and glamour. Each and every Rolls-Royce (RR) is hand built in Crewe, England. This one was especially built for Michael. He designed the interior himself with 24K gold embellishments added to the already magnificent interior of Connelly leather and rich walnut. The vehicle offers a 5.4-liter V-12 aluminum-alloy engine capable of speeds up to 140 mph, which was developed for RR by BMW. This was RR's first V-12 engine since the Phantom III in 1939. It is also equipped with a 5-speed automatic transmission and independent suspension with adaptive ride control, along with almost every amenity imaginable. RR produced only 1,570 Silver Seraphs from 1998–2002.

\$140,000 – 160,000



851, interior



852, detail



852, interior



852

852

**1954 CADILLAC FLEETWOOD SERIES 60 SPECIAL 4-DOOR SEDAN
FROM *DRIVING MISS DAISY***

VIN: 546004169

Cadillac styling has always been a trendsetter. The '50s are a prime example of true Cadillac styling with lower, sleeker bodies, inverted gull-wing front bumpers, panoramic wraparound windshields, and V-shaped hood ornamentation. The wheelbase of this sedan is a voluminous 133 inches. The engine is an overhead valve design, 230 HP, 331 CID V-8 with automatic transmission. The interior appointments are plush Fleetwood style. General Motors had a long list of standard equipment for this production year that included automatic windshield wipers and 12-volt electrical system. They produced 16,200 Series 60s during this model year. What makes this one exceptional beyond its current ownership? Morgan Freeman sat behind the wheel of this car while driving Jessica Tandy who portrayed Daisy Werthan when the vehicle was used during the filming of *Driving Miss Daisy*, the 1989 Oscar® winner for Best Picture.

\$20,000 – 30,000



853



854

853

LIFE-SIZE OSCAR STATUE

Larger-than-life statue of the Academy of Motion Picture Arts and Sciences iconic Oscar in gold fiberglass with a flat back. Jackson famously attended the 63rd Academy Awards ceremony with Madonna.

88 ½ by 31 by 19 inches

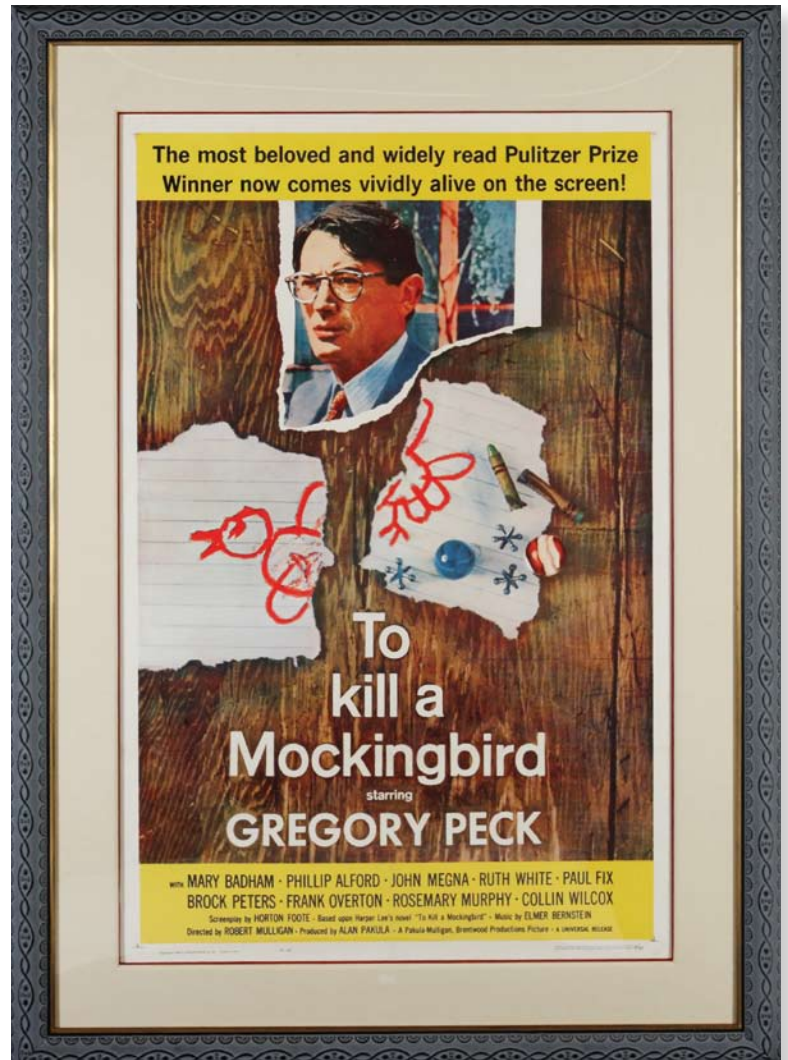
\$200 – 300

854

MARLENE DIETRICH-SIGNED PRINT

Original signed and numbered portrait print of Marlene Dietrich. Dietrich has signed over the image of the print, "To Michael Marlene Dietrich," in silver marker as well as "Marlene Dietrich" in pencil in the lower margin. The print is additionally signed illegibly by the artist in the lower right and numbered in the lower left, "88/280."

\$400 – 600



855
TO KILL A MOCKINGBIRD DAYBILL

Universal, 1962, Australian daybill,
condition A.

30 by 13 inches

\$80 – 120

856
TO KILL A MOCKINGBIRD POSTER

20th Century Fox, 1965, one-sheet poster,
condition A, framed.

41 by 27 inches

\$400 – 600



857



858



859

857
THE SOUND OF MUSIC POSTER

20th Century Fox, 1965, British quad poster, condition A, framed.

41 by 50 ½ inches

\$300 – 500

858
THE WINDOW POSTER

RKO Radio Pictures, 1949, three-sheet poster, condition A, framed.

80 by 40 inches

\$80 – 120

859
THE BOY WITH GREEN HAIR POSTER

RKO Radio Pictures, 1948, three-sheet poster, condition A, framed.

80 by 40 inches

\$80 – 120



860



861



862

860 RODDY McDOWALL-SIGNED PHOTO

A 13x10-inch vintage sepia photograph of Roddy McDowall in an elaborately decorated frame, inscribed in black ink, "To Estelle In appreciation for all the lovely things you have done for me Love Roddy."

23 ½ by 16 inches

\$100 – 150

861 BMI AWARD

Framed BMI certificate for Sam Cooke's "I'll Come Running Back To You." The 1958 Citation of Achievement is presented to Venice Music, Incorporated.

13 by 17 inches

\$80 – 120

862 LOUIS ARMSTRONG STATUE

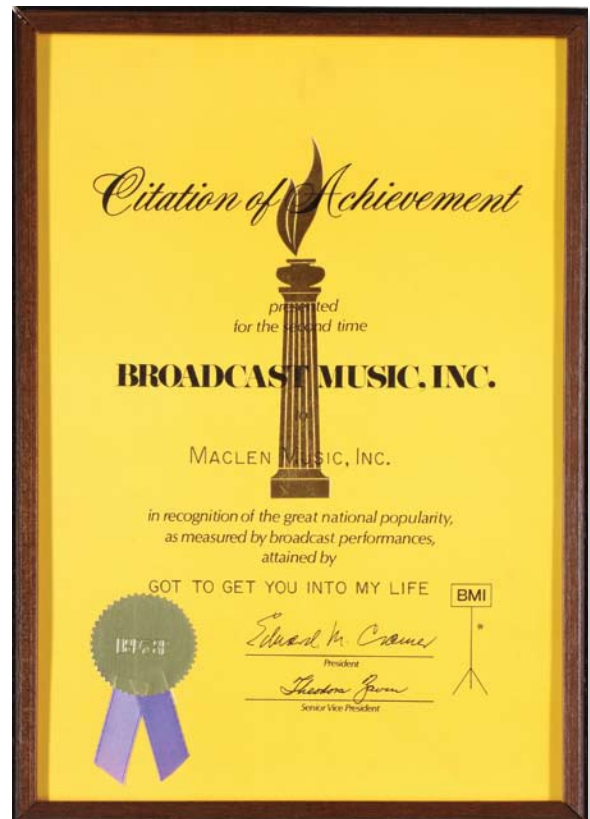
Painted fiberglass life-size statue of famed jazz musician Louis Armstrong wearing a yellow suit.

68 by 27 by 17 ½ inches

\$200 – 300



863



863



863



863

863

GROUP OF THE BEATLES BMI ACHIEVEMENT CERTIFICATES

Group of five BMI citations of achievement presented to MacLen Music, Inc. in recognition of the great national popularity, as measured by broadcast performances attained by "Michelle," 1967; "Got To Get You Into My Life," 1978; "Yesterday," Special Citation 4 million broadcast performances; "Eleanor Rigby," 1968; and "Hey Jude," 1968.

16 ¾ by 12 ¾ inches

\$300 – 500



864, partial

864

THE BEATLES BOOK AND MUSIC LIBRARY

Collection of approximately 37 books on John Lennon and The Beatles, as well as titles including *Elvis Day by Day*, *Recording Studio Design*, *Blues Who's Who*, *The Billboard Illustrated Encyclopedia of Rock*, *The Rolling Stones: A Life on the Road*, and many other titles.

\$300 – 500



865



866

865
THE SIMPSONS
SPRINGFIELD DIORAMA

Three-dimensional pewter representation of the Simpsons' home with a number of figures that each lift out on their own base.

7 by 11 ¼ by 8 ¾ inches

\$80 – 120

866
DAFFY DUCK STATUE

Freestanding statue of Daffy Duck in vintage hat, trench coat, and spats holding a briefcase open on a base painted to look like a street corner with an Acme manhole cover.

62 by 43 by 35 inches

\$300 – 500



867

867
DAFFY DUCK STATUE

Freestanding statue of Daffy Duck with hands on hips.

54 by 28 by 18 inches

\$200 – 300



868, partial

868

**WARNER BROS.
EDITION FIESTAWARE**

Partial mixed set of Fiestaware, including pieces in blue, pink, yellow, and green, many featuring Warner Bros. characters Bugs Bunny and Porky Pig. Comprised of nine dinner plates, twenty-nine shallow bowls, nineteen dessert plates, four soup bowls, four cereal bowls, eight fruit bowls, eleven tea cups, one tea kettle, two water pitchers, seven salt and pepper shakers, two oval serving platters, and one serving bowl. 97 items total.

\$200 – 400

869

WILE E. COYOTE LIFE-SIZE FIGURE

Freestanding painted fiberglass figure of Wile E. Coyote in a running stance on fabric-covered base.

60 by 56 by 30 inches

\$400 – 600



869



870



871



872

**870
BABY SYLVESTER STATUE**

Custom fiberglass figure of a baby Sylvester the Cat hoisting a group of baby blocks that spell ACME and his baby bottle.

43 by 31 by 15 inches

\$300 – 500

**871
PEDAL CAR**

Red fire engine child's pedal car with bell mounted to hood by Burns Novelty and Toy.

23 by 38 by 15 inches

\$40 – 60

**872
PEDAL PLANE**

Metal pedal plane modeled after the 1941 Steelcraft U.S. Army patrol plane.

26 by 49 by 40 inches

\$100 – 150



873

873
LIFE-SIZE FIGURE OF A MAID

Molded rubber life-size figure of a maid wearing a traditional maid's uniform of black skirt and shirt and white apron and hat. The figure has glass eyes, is wearing glasses, and is carrying a metal tray.

64 by 21 by 25 inches

\$400 – 600



874

874
LIFE-SIZE BUTLER

Molded rubber life-size figure of a butler. The figure, which has glass eyes and glasses, is wearing a tuxedo with black patent leather shoes and is holding a metal tray.

73 by 26 by 24 inches

\$400 – 600



875



876

**875
PERSONALIZED
CHILDREN'S FURNITURE**

Toy chest bench and matching rocking chair with purple and black upholstered cushions and hand-painted decorations reading "Always a Prince" and "The Crown Jewels."

Largest, 26 ½ by 13 ½ by 19 inches

\$80 – 120

**876
CURRENCY-COVERED CASE**

Small attaché made of board with snap closures, papier-mâché, covered with U.S. \$1 bills.

15 by 11 by 5 inches

\$40 – 60



877

877
MICHAEL JACKSON
PRESENTATION CHARANGO

Presentation Chilean musical instrument in case with plaque that reads "The Charango is a corbofono, a folkloric musical instrument, of...Colombian origin, possibly quechua and aimara. It is said to be an indigenous replica of the Spanish guitar, the antique musical instrument was made from the shell of a Quirquincho, today it is made from wood and used for popular music. Dangerous Tour 1993, Santiago, Chile October 1993."

\$200 – 300

878
PROP HARP

Egyptian style gold-painted fiberglass prop harp with nylon strings and the bust of a pharaoh at front.

77 by 50 by 21 inches

\$80 – 120



878



GRUBB

OR P. 114997
Lochin, G.M. 189,888

SILENT NIGHT



THE COLLECTION OF THE KING OF POP

Michael Jackson

Amusements, Arcade Games & Entertainment

April 24, 2009

2:00 p.m. (PST)

Session VI, Lots 879 – 1084



879

879
SEATED LIFE-SIZE FIGURE

Costumed figure of a man seated on a pink fiberglass cube with faces on each side and foot resting on a piece of candy. The man has a lifelike resin face with glass eyes; he is wearing grey pants, spats, and a purple velvet jacket with matching top hat, holding a walking stick.

59 by 40 by 20 inches

\$200 – 300



880

880 CLOWN AUTOMATA

Electric, coin-operated clown magician automata that plays the Blue Danube Waltz. Clown sits on wooden pedestal base.

69 by 20 by 16 inches

\$100 – 150



881

881 LIFE-SIZE TOY SOLDIER

Freestanding, hollow life-size figure of a toy soldier made from molded plastic.

74 inches

\$100 – 150



882

882

SMALL INDOOR POPCORN CART

With red and yellow decoration. Made by Cretors, T-2000 model, serial number 89115206.

66 by 24 by 38 inches

\$400 – 600



883

883

TAYLOR SLUSH MACHINE

Dual-flavor Taylor frozen carbonated slush machine.

65 by 33 by 24 inches

\$800 – 1,200



884

**884
FIRE ENGINE TEA KETTLE**

With moving wheels.

12 by 8 by 11 inches

\$100 – 200

**885
COLLECTION OF COOKIE JARS**

Large collection of ceramic cookie jars, including a yellow cab full of Warner Bros. characters, The Flintstones, Pinocchio, Humpty Dumpty, Poison Ivy from Batman, and James Dean.

Tallest, 14 inches

\$100 – 150

**886
WAITER STATUETTE**

Molded plastic restaurant decoration in the form of a waiter holding two plates that say "NYC."

20 ½ by 17 ½ by 9 ½ inches

\$40 – 60



885



886



887



888

**887
BREVETTI GAGGIA ESPRESSO
AND CAPPUCCINO MACHINE**

In polished chrome with repoussé and reticulated decoration, bears a Neverland plaque, is flanked by decorative Turkish tea vessels, and is crested by an eagle finial. Model number Orione 1G-U, serial number 1153.

44 by 36 by 24 inches

\$1,000 – 2,000

**888
ANGLDILE HONEST WEIGHT
CANDY SCALE**

In red with black trim. Springless Automotive model, Style E, serial number 9571.

25 ½ by 30 by 12 inches

\$300 – 500

**889
BREVETTI GAGGIA ESPRESSO
AND CAPPUCCINO MACHINE**

Two-tone metal featuring polished chrome with bands of repoussé and reticulated brass. Tank bears a Neverland plaque, is flanked by decorative Turkish tea vessels, and is crested by an eagle finial. Model number Orione 1G-U, serial number 1154.

44 by 36 by 24 inches

\$1,000 – 2,000

889





890

**890
VINTAGE NATIONAL
CASH REGISTER COMPANY
CASH REGISTER**

In patinaed metal with elaborate repoussé decoration and white marble plate.

Model number 47-2-2, serial number 455830. Lacking key.

24 by 26 ½ by 16 inches

\$400 – 600



891

891
LIFE-SIZE SEATED WOMAN

Life-size seated figure of a woman posed as if she is having tea. Seated on a woven seat ladder-back chair and wearing a grey skirt, white shirt, pearl earrings, necklace, brooch, and a black hat. Head and hands made of sculpted fiberglass.

53 by 22 by 22 inches

\$200 – 300



892

892
LIFE-SIZE BUTLER

Life-size figure of a butler made from sculpted fiberglass with glass eyes and glasses. The figure is wearing a white tuxedo shirt, bowtie, and black jacket with tails, holding a tray with white gloves.

69 inches

\$300 – 500



893

893

LIFE-SIZE FIGURE

Molded rubber life-size figure of a chef and sommelier wearing tuxedo pants, shirt, cummerbund, bow tie, and chef's hat with arms posed to present a bottle of wine. The figure has glass eyes and is wearing glasses. Freestanding on metal base.

70 inches

\$500 – 700



894

894

LIFE-SIZE SEATED FIGURE

Life-size seated figure of a man in a tweed suit with shirt, tie, and military hat. Head and hands made of sculpted fiberglass.

56 by 20 by 34 inches

\$200 – 300



895

**895
PLASMA BALL**

Large-scale plasma ball on custom base with vintage style dials and knobs, by Larry Albright, a California-based sculptor specializing in plasma balls and crackle tubes.

Height, 64 inches; ball diameter, 32 inches

\$2,000 – 3,000

**896
REGINA TABLETOP MUSIC BOX**

Coin-operated table model music box made by the Regina Music Box Co., Rahway, N.J., circa 1898. The rectangular, lift-top oak case houses a spring-wound music box action that plays 15 ½ inch diameter discs on two 6 ½ inch combs. Contains one copper disc, "Love Story."

13 by 20 by 22 inches

\$2,000 – 3,000



896



897, detail

897

J.P. SEEBURG NICKELODEON

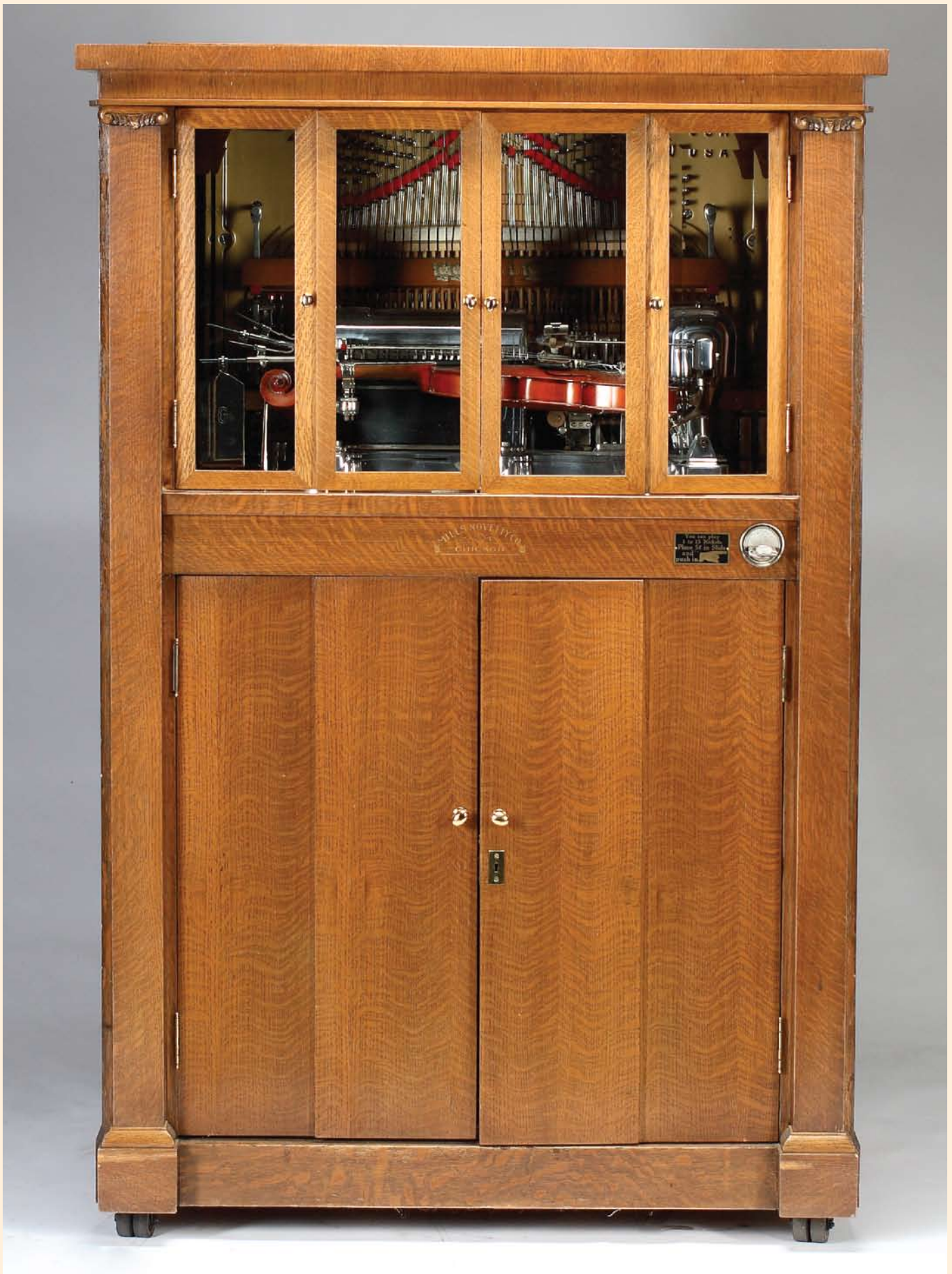
J.P. Seeburg Piano Company, Model L, player piano in a quartersawn oak cabinet with tiger-stripe grain and scenic leaded stained glass window panels in doors. Brass plate on front of machine reads "J.P. Seeburg Piano Company Chicago, Simplicity Reliability Endurance." One roll of music paper present.

52 by 23 ¼ by 37 inches

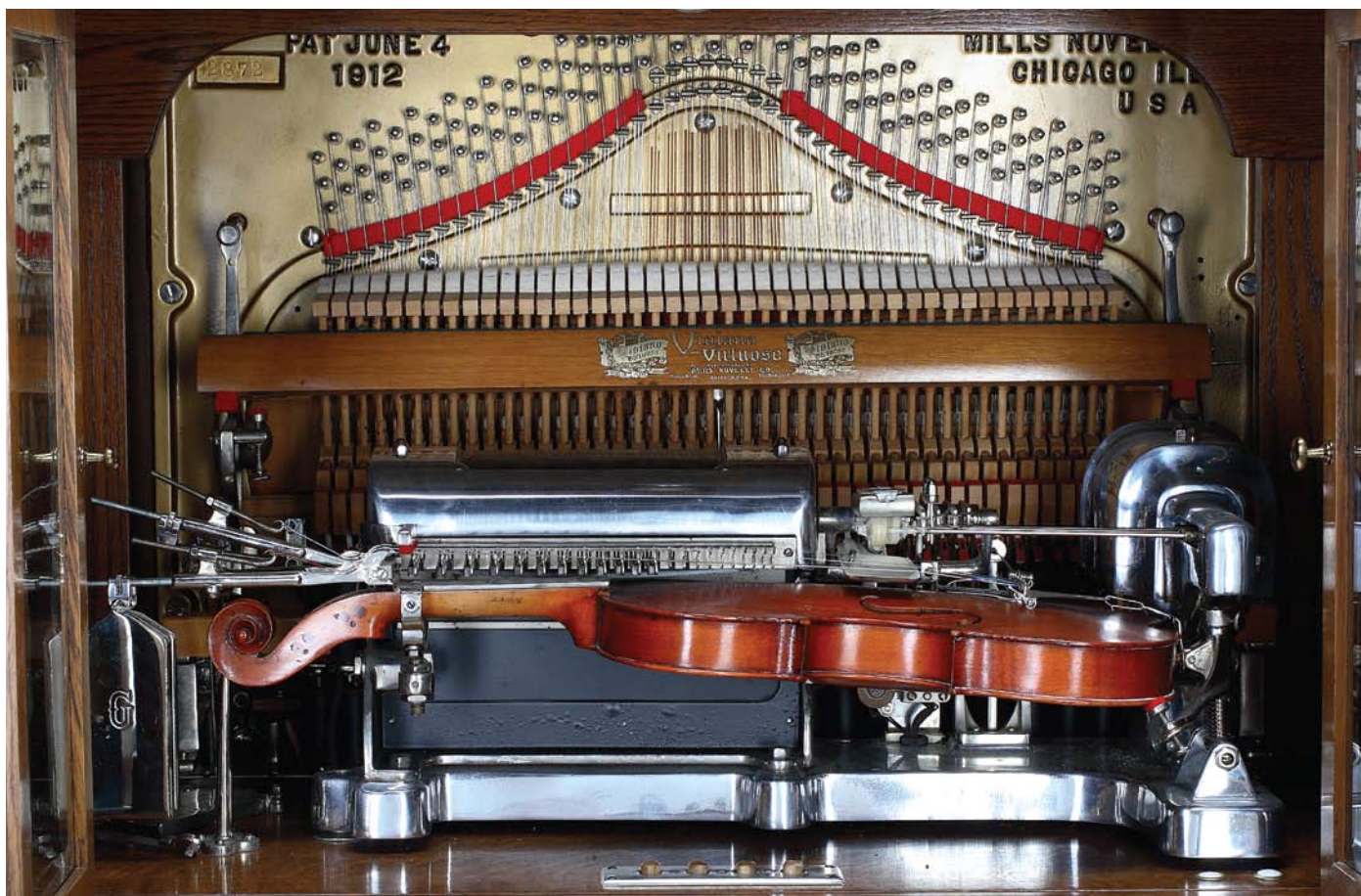
\$3,000 – 5,000



897



898



898, detail



898, detail



898, detail

898

COIN-OPERATED MILLS VIOLANO VIRTUOSO

Self-playing violin with piano accompaniment. Housed in a tiger oak cabinet with upper bi-fold wood and beveled glass doors over two solid panel doors. Serial number 2872, patent date on unit June 4, 1912.

65 by 42 by 30 ¾ inches

\$20,000 – 30,000



899

**899
WOODEN ROCKING HORSE**

Custom-carved wooden rocking horse featuring horsehair mane and tail, with leather saddle.

52 by 72 ½ by 20 inches

\$400 – 600



900

**900
ZOETROPE TABLE**

Black table featuring two spinning metal barrels and a paper holder with piano-hinged holder marking out 12 individual frames. The set includes 12 sequential stamps of a horse and rider. The paper strips are meant to be attached to the inside of the metal drums, which spin to create an animated image.

33 ¼ by 51 ½ by 29 inches

\$100 – 150

901

MUTOSCOPE

Vintage "clamshell" Mutoscope dating from circa 1910. Mutoscopes, which were invented during the late 1890s, represent one of the earliest forms of cinema in the United States. The "movies" displayed within the machine were created by a "flip book" process.

54 by 16 by 16 inches

\$1,000 – 1,500



901



902

**902
LITTLE GIRL DISPLAY**

Hand-painted composition figure of a little girl eating a cookie. This 1920s style piece has been mounted to a wooden base that reads "Neverland Ranch."

33 by 22 by 16 ½ inches

\$100 – 150



903

**903
FAIRBANKS DOCTORS SCALE**

American doctors scale by Fairbanks Scale Co., circa 1915. The scale is on wheels and features green painted metal, wood, and brass fittings, including a height measuring arm.

57 by 29 by 32 inches

\$1,000 – 1,500



904

**904
WOODEN MUTOSCOPE**

Oak cabinet Mutoscope mounted to matching wooden base with cast-iron moldings.

52 by 19 by 8 ¼ inches

\$400 – 600



905

**905
CAIL-O-SCOPE**

Vintage coin-operated Cail-O-Scope peep-show arcade machine. Fully loaded with photos.

49 by 20 by 17 ½ inches

\$2,000 – 3,000



906

**906
LADIES DRESS FORM**

Late Victorian ladies dress form with cloth torso over metal frame base.

64 by 15 by 11 inches

\$400 – 600



907

**907
VINTAGE COUNTRY STORE
BARREL SCALE**

Red with brass trim, made by Computing Scale Co., Dayton, Ohio.

32 by 17 by 18 1/2 inches

\$400 – 600



908

**908
STIMPSON VINTAGE CANDY SCALE**

Reads "Stimpson Computing Scale
Company, Detroit, MI."

31 by 19 by 17 inches

\$600 – 800



909

**909
A DAYTON COUNTERTOP
COMPUTING SCALE**

Two-pound scale in metallic blue. Style
number 166.

14 ½ by 14 ½ by 12 inches

\$250 – 350



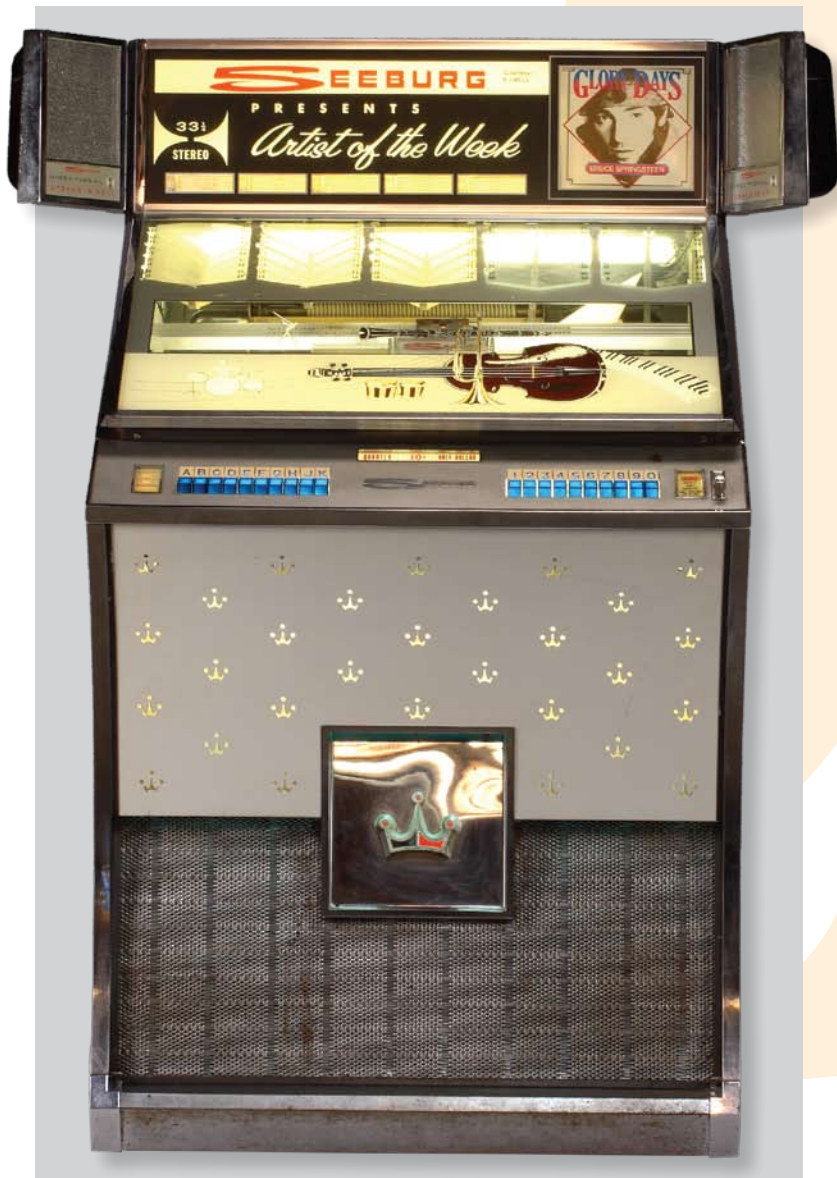
910

**910
A MODERN CERAMIC DRUM**

Inscribed "Fullcircle" on the interior.
With a goat skin head.

Height, 12 inches; diameter, 8 ½ inches

\$40 – 60



911

**911
SEEBURG JUKEBOX**

Seeburg Select-O-Matic directional stereo in 33 1/3 jukebox; model DS100H, serial number 310495.

57 by 44 by 24 inches

\$1,500 – 2,000



912

**912
PHILCO RETRO
RADIO AND STAND**

Philco compact disc and record player with built-in speakers, housed in a retro oak cabinet together with a matching oak stand with single drawer.

Overall, 36 by 15 by 19 inches

\$80 – 120



913, interior



913



914



915, partial

913 VICTORIAN STYLE DOLLHOUSE

Deep red open-back Victorian style dollhouse with white trim, shingled roof, wraparound front porch, and weather vane. The house has seven rooms and is partially furnished.

42 by 30 by 20 inches

\$400 – 600

**914
HAND-PAINTED DISPLAYS**
Pair of painted wood rabbit standees, together with a Humpty Dumpty figure, all stamped "Artwork and Design by Bonnie Barrett Boardwalk Originals."

27 by 18 inches

\$80 – 150

915 DUNCAN ROYALE FAIRIES

Group of 19 Woodland Fairy figurines from the Collector's Edition of Duncan Royale of Fullerton, California. Characters include two Cherry Tree, two Pine Tree, Elm, two Christmas Tree, Sweet Chestnut, Lime Tree, Chestnut Tree, two Apple Blossom, Guelder Rose, Sycamore, two Mulberry, Poplar, and one unidentified.

Tallest, 10 inches

\$200 – 300



916, partial



916, partial



917



918

916 GROUP OF TOYS

Group of six musical and decorative toys: lacquered music box that plays "The Teddy Bears' Picnic"; painted ceramic Aladdin that plays "Friend Like Me"; musical, animated model of the Nottingham Ferris Wheel; reproduction tin merry-go-round toy; plastic toy crown; and illuminated ceramic teepee with mice.

Tallest, 13 ½ by 7 ¼ by 7 inches

\$100 – 150

917 MONOPOLY PEDESTAL TABLE

Collector's Edition Monopoly game board mounted to a pedestal table with four wooden folding chairs featuring the Monopoly logo. Together with three boxes of spare game cards and pieces.

32 by 22 by 22 inches

\$100 – 150

918 ENESCO ANIMATED MUSICAL

Treasure Chest of Toys introduced in 1987, plays "Toy Symphony."

8 by 7 by 5 ½ inches

\$80 – 100



919

919 DOLL IN DISPLAY CASE

Large black pedestal on casters with large Plexiglass cover. The case contains a 29-inch Renate Hornung handmade doll on metal stand with armature.

81 by 25 by 14 inches

\$300 – 500



920



920

920 ENESCO ANIMATED MUSICALS

Pair of animated musical figurines created by Enesco. The first, introduced in 1995, is titled "Sir Mickey To The Rescue" and plays "Once Upon A Dream." The second, introduced in 1993, is titled "The Enchanted Clock Tower" and plays "Syncopated Clock" The latter is housed in a custom Enesco retailer musical activator case.

Clock tower, 18 by 12 ½ inches

\$300 – 500



921



922

921 ENESCO ANIMATED MUSICALS

Three animated musical figurines housed in a triple musical activator case. Figurines include "Strike Up The Band," introduced in 1993, which plays "Stars And Stripes Forever"; "Santa Claus Is Coming," which plays "Up On The Rooftop"; and "Home On The Range," introduced in 1993, which plays "Whistle While You Work."

16 by 36 by 12 inches

\$400 – 600

922 ENESCO ANIMATED MUSICALS

Three animated musical figurines housed in a triple musical activator case. Figurines include "Top Billing For Santa," introduced in 1993, which plays "Santa Claus Is Coming To Town"; "The Magic Dragon," introduced in 1991, which plays "Puff, The Magic Dragon"; and "Mickey's Magic Toy Chest," introduced in 1993, which plays "Mickey Mouse Club March."

16 by 36 by 12 inches

\$400 – 600



923

923
LIFE-SIZE FIGURE OF A WOMAN

Molded rubber life-size figure of a woman in a pink bathrobe with glasses and hair in curlers and under a shower cap. The figure is holding a bath loofah and a copy of *Men Are from Mars, Women Are from Venus*.

65 by 22 by 18 inches

\$400 – 600



924

924
DOLL CURIO CABINET

Custom-oak curio display cabinet with dual spotlights and double-door cabinet below for storage. The display contains two intricately detailed dolls, named Veronica and Lissy, handmade by Renate Hornung.

Case, 62 by 27 by 18 inches

\$1,000 – 1,500



925



926

925 ENESCO ANIMATED MUSICALS

Three animated musical figurines housed in a triple musical activator case. Figurines include "Movie Projector," introduced in 1992, which plays "Hooray For Hollywood"; "Yuletide Enchantment" introduced in 1992, plays "Silver Bells"; and "Pa-Pa Jano" introduced in 1990, plays "Santa Lucia."

16 by 36 by 12 inches

\$400 – 600

926 ENESCO ANIMATED MUSICALS

Three animated musical figurines housed in a triple musical activator case. Figurines include "Train On The Right Track," introduced in 1992, which plays "Casey Jones"; "Beauty And The Beast," introduced in 1994, which plays "Be Our Guest"; and "Grape Expectations," introduced in 1991, which plays "Funiculi Funicula."

16 by 36 by 12 inches

\$400 – 600



927



928

927

ENESCO ANIMATED MUSICALS

Three animated musical figurines housed in a triple musical activator case. Figurines include "Fan-Fair," which plays "In The Good Old Summertime"; "Where's The Fire," introduced in 1992, which plays "There'll Be A Hot Time In The Old Town Tonight"; and "Waggin' Tails," introduced in 1993, which plays "Oh My Darling Clementine."

16 by 36 by 12 inches

\$400 – 600

928

ENESCO ANIMATED MUSICALS

Three animated musical figurines housed in a triple musical activator case. Figurines include "Party Line," introduced in 1993, which plays "I Just Called To Say I Love You"; "Checking It Twice," introduced in 1992, which plays "Santa Claus Is Coming To Town"; and "Popcorn Carnival," introduced in 1993, which plays "Pop Goes The Weasel."

16 by 36 by 12 inches

\$400 – 600



929



930

929

ENESCO ANIMATED MUSICALS

Three animated musical figurines housed in a triple musical activator case. Figurines include "Mickey's Christmas Delivery," introduced in 1993, which plays "Here Comes Santa Claus"; "Knitting Pretty," introduced in 1991, which plays "Whistle While You Work"; and "Piano-Music-Mice-Tro," introduced in 1992, which plays "Polonaise."

16 by 36 by 12 inches

\$400 – 600

930

ENESCO ANIMATED MUSICALS

Three animated musical figurines housed in a triple musical activator case. Figurines include "It's Tea-Lightful," introduced in 1991, which plays "Tea For Two"; "On The Spot Fire Department," introduced in 1992, which plays "There'll Be A Hot Time In The Old Town Tonight"; and "The Grabber," introduced in 1994, which plays "The Entertainer."

16 by 36 by 12 inches

\$400 – 600



931



932

931

ENESCO ANIMATED MUSICALS

Three animated musical figurines housed in a triple musical activator case. Figurines include "Christmas Jamboree," introduced in 1992, which plays "Deck The Halls"; "Dream Keeper," introduced in 1990, which plays "Memory"; and "All We Want For Christmas," introduced in 1990, which plays "Jolly Old Saint Nicholas."

16 by 36 by 12 inches

\$400 – 600

932

ENESCO ANIMATED MUSICALS

Three animated musical figurines housed in a triple musical activator case. Figurines include "Home Spun Holidays," introduced in 1993, which plays "Carol Of The Bells"; "Treasure Chest Of Toys," introduced in 1987, which plays "Toy Symphony"; and "Gone Fishing," which plays "In The Good Old Summertime."

16 by 36 by 12 inches

\$400 – 600



933



934

"I remember that when I was a kid, THE WIZARD OF OZ was shown on television once a year and always on a Sunday night. Kids today can't imagine what a big event that was for all of us because they've grown up with videocassettes."

Michael Jackson

933

THE WIZARD OF OZ MUSICAL STATUETTES

A group of eleven small statuettes depicting various scenes from the film *The Wizard of Oz*, each playing a different song from the film. Tunes include: "There's No Place Like Home," "What A Fuss You're Making," "I'm Melting! Melting!," "A Brain, A Heart, The Nerve," "Whoops There Goes Some Of Me Again," "I'm Glinda The Good Witch," "The House Began To Pitch," "I'll Get You My Pretty," "My Goodness I Can Talk Again," and "We Represent The Lollipop Guild."

5 ½ inches

\$200 – 300

934

THE WIZARD OF OZ DOLLHOUSE

Hinged wooden dollhouse with color decal decoration that opens to reveal the interior of Dorothy's Kansas home. The home is complete with witch's legs and ruby slippers sticking out from beneath the home.

13 by 14 by 10 ½ inches

\$40 – 60



935

935

THE WIZARD OF OZ FIGURINES

A large group of figurines from *The Wizard Of Oz*, including fifteen painted ceramic salt and pepper shakers and twenty-two rubber plastic figurines

Tallest, 4 inches

\$40 – 60

936

THE WIZARD OF OZ MEMORABILIA

Large group of collectible, *Wizard of Oz* items, including five 8 1/2" decorative collector plates, a painted ceramic musical figurine that plays "We're Off to See the Wizard," a black and white photo lacquer box, a music box that plays "We're Off to See the Wizard" with color photo, a large ceramic cookie jar, and a metal eyeglass case.

Cookie jar, 13 by 9 inches

\$100 – 150

937

PETER RABBIT BOOKENDS

Pair of painted resin Beatrix Potter bookends featuring Peter Rabbit with Flopsy, Mopsy, and Cotton-Tail.

7 by 12 by 5 inches

\$30 – 50



936



937



938



939, partial

938
THE WIZARD OF OZ
JACK IN THE BOX SET

Complete 50th Anniversary set of *The Wizard of Oz* lacquered musical jack in the boxes: Dorothy plays "Somewhere Over The Rainbow"; Glinda plays "Munchkin Land"; Cowardly Lion plays "If I Were King Of The Forest"; Tin Man plays "We're Off To See The Wizard"; two Scarecrows play "If I Only Had A Brain"; and Wicked Witch plays "Wicked Witch Of The West."

8 by 6 by 6 inches

\$200 – 300

939
SHIRLEY TEMPLE MEMORABILIA

A group of Shirley Temple collectibles, including a small ceramic figurine of Temple posing with a bi-plane titled "Bright Eyes" and numbered "650," a wooden swivel frame with black and white image of Temple, two framed photos, and a Danbury Mint plate of Temple titled "Wee Willie Winkie" and numbered "C331."

Figurine, 5 1/2 by 6 1/2 by 6 inches

\$80 – 120

940
LIFE-SIZE GIRL STATUE

Life-size fiberglass statue of a Shirley Temple style girl wearing a blond wig with ringlet curls and a red and white polka dot skirt.

42 by 31 by 14 inches

\$80 – 120



940



941



941, detail

**941
MONUMENTAL SHIP MODEL**

Large-scale wooden model of a three-mast-tall ship with three-deck stern and canvas sails. The entire boat and base are enclosed in a Plexiglass cover.

Overall, 60 ¼ by 26 by 75 inches

\$400 – 600

"I love the movies and have since I was real little. For two hours you can be transported to another place. Films can take you anywhere. That's what I like — I can sit down and say, 'Okay, nothing else exists right now. Take me to a place that's wonderful and make me forget about my pressures and my worries and day-to-day schedule.'"

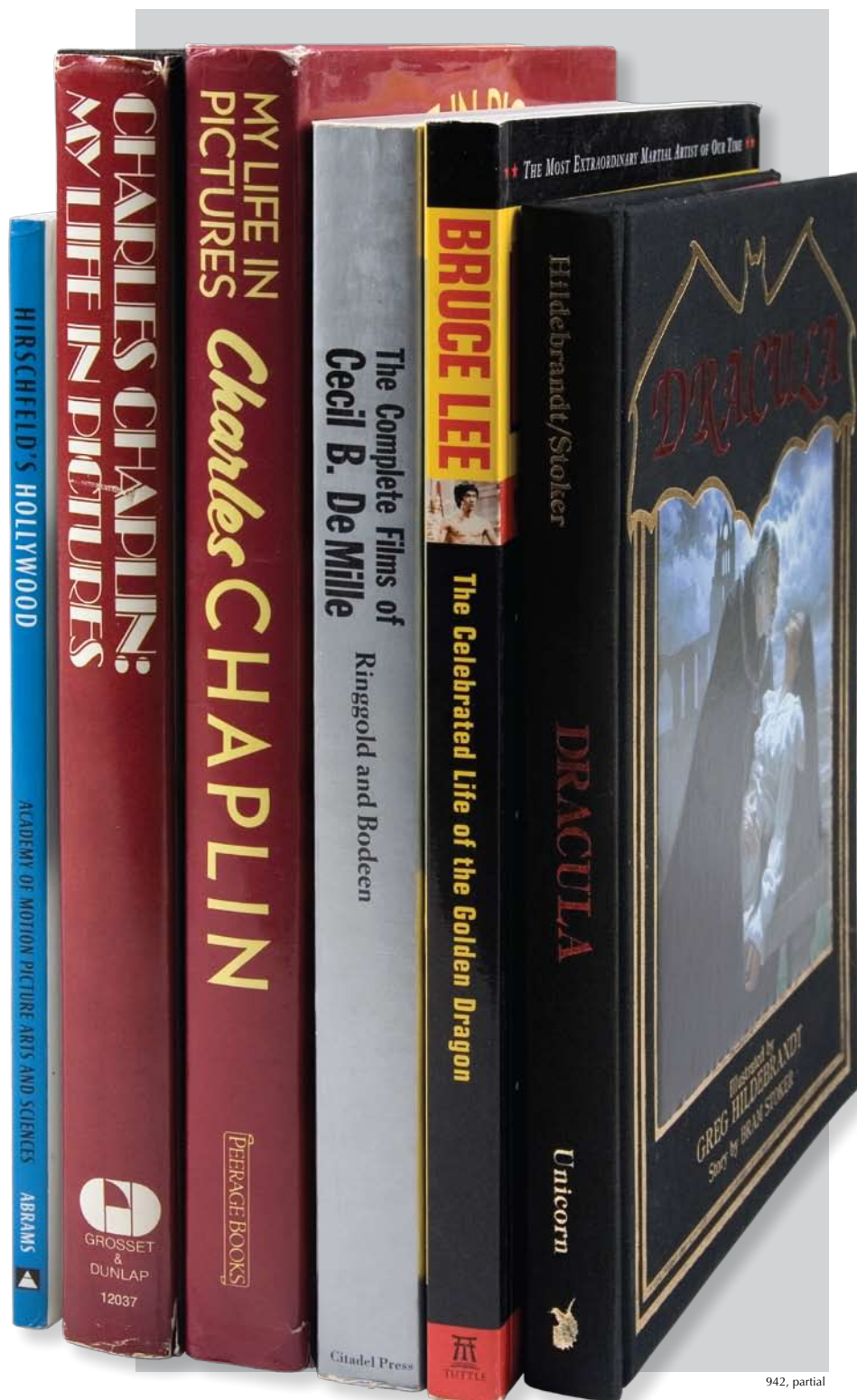
Michael Jackson

942

ENTERTAINMENT LIBRARY

Collection of approximately 143 books on the entertainment industry, including biographies and autobiographies for Steven Spielberg, Alfred Hitchcock, Elia Kazan, Fred Astaire, Charlie Chaplin, Marlon Brando, Edith Head. In addition are a number of Hollywood history and photo books, including *Hollywood Portraits*, *M-G-M's Greatest Musicals*, *Hollywood Musicals*, *70 Years of the Oscar*, and many other entertainment-related titles.

\$400 – 600



942, partial



943

**943
WALNUT ROCKING HORSE**

Extra-large Stevenson Brothers walnut rocking horse with horsehair mane and tail, leather bridle and saddle, made in Bethersden Kent, England. Serial number 3370, 1993.

59 by 70 by 23 inches

\$1,000 – 1,500



944

**944
WOODEN TRAIN MODEL**

Large-scale model of a locomotive made entirely of wood, with many moving parts, sitting on a short section of track.

18 by 38 ½ by 8 inches

\$80 – 120



945

945

MAPLE ROCKING HORSE

Large Stevenson Brothers maple rocking horse with horsehair mane and tail, leather bridle, and saddle, serial number 3367, 1999.

49 by 56 by 18 inches

\$800 – 1,200



946



947



948

946
DENVER & RIO GRANDE WESTERN
 Denver & Rio Grande Western,
 locomotive #463, and Rio Grande coal
 car made in western Germany by "CHR
 HOENE Magnus Handworks."

7 1/2 by 19 1/2 inches

\$200 – 300

947
NORFOLK & WESTERN TRAIN
 Norfolk & Western Railroad mainline
 steam locomotive, class J 4-8-4
 locomotive #611. Plate on bottom reads
 "G.R. 10 of 16."

42 by 6 inches

\$100 – 150

948
UNION PACIFIC TRAIN
 Union Pacific, locomotive #837FEF-3-80
 25/32 70B with common standard tender
 class 25-C-103. Plate on bottom reads
 "G.R. 24 of 66."

7 by 42 inches

\$300 – 500

949

LIMA LOCOMOTIVE WORKS

Lima Locomotive Works Incorporated,
4-0-4, brass steam locomotive 1:24-scale
train, serial number 52.

7 by 28 inches

\$100 – 150



949

950

**DELTON LOCOMOTIVE WORKS
"HUNTINGTON"**

C.P. Huntington, 1863, 4-2-4, brass
#1 locomotive 1:24-scale train, serial
number 67.

7 by 28 inches

\$300 – 500



950

951

**DELTON LOCOMOTIVE WORKS
"BRECKENRIDGE"**

Denver South Park & Pacific Railroad,
2-6-6T, brass Mason Bogie #15
"Breckenridge" 1:24-scale train, serial
number 200. This model was the first U.S.
Colorado narrow gauge prototype to be
made for 45mm track.

7 by 28 inches

\$400 – 600



951

952

DELTON LOCOMOTIVE WORKS

Baltimore and Ohio Railroad, 4-4-0,
brass S&S #4 locomotive and tender
1:24-scale train.

7 by 28 inches

\$100 – 150



952

953

**DELTON LOCOMOTIVE WORKS
"RIO GRANDE"**

Denver & Rio Grande Railroad,
2-6-0, brass #10 locomotive and tender
1:24-scale train, serial number 127.

7 by 28 inches

\$200 – 300



953



954



955

954 ICE CREAM BIKE

Vintage ice cream bike with dual-compartment cooler, painted powder blue and white with an ice cream bar and 5 cents on the side. Handlebars have a bar of bells attached to get the attention of potential customers.

40 by 25 by 100 inches

\$200 – 300

955 ANIMATED SWEETHEART SOAP STORE DISPLAY

Automaton of a composition baby in a bassinet holding a rattle and a box of Sweetheart Soap. When activated, the baby moves its arms and legs and lifts its head in a realistic fashion. Cardboard marquee on front lights up and reads "My First Sweetheart, The Soap That Agrees with Your Skin."

27 by 32 by 17 inches

\$100 – 150



956



957



958

956

LARGE PHENAKISTOSCOPE

Large-scope early animation phenakistoscope wheel mounted to wooden base with hand crank. When the image side of the wheel faces a mirror, observers looking through the back side of the disc will see the image seamlessly animated.

49 ½ by 31 by 19 inches

\$400 – 600

957

PERPETUAL CALENDARS

Pair of wood perpetual desktop calendars with paper scrolls for day, date, and month operated by knobs at each side.

12 by 8 ½ by 3 ½ inches

\$80 – 120

958

VICTOR VICTROLA TALKING MACHINE

In oak cabinet with two doors. Serial number VV-X549439. Includes RCA Victor *Snow White and the Seven Dwarfs* disk. Disk number 3345-4256-A.

42 by 17 ½ by 21 inches

\$300 – 500



959



960

**959
RAFFIN MINI PIPE ORGAN**

Original Raffin R 20/31 hand-crank mini pipe organ box, which plays 20 note paper music rolls with 31 pipes.

15 by 18 ½ by 13 inches

\$800 – 1,200

**960
NATIONAL BRASS CASH REGISTER**

A 1913, National model 452, brass short tag cash register, serial number 1024629, on oak base with white marble plate.

22 by 16 by 24 inches

\$300 – 500



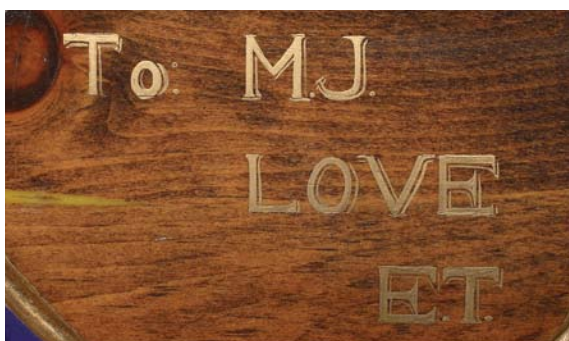
961

**961
ELIZABETH TAYLOR-GIFTED
CAROUSEL HORSE**

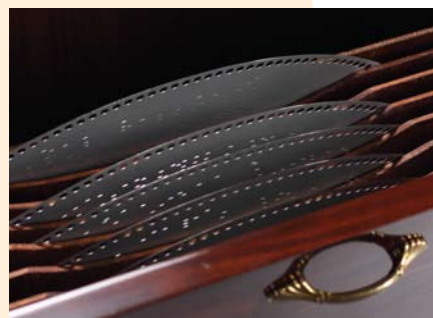
Custom-carved wooden rocking carousel horse, featuring horsehair tail and brass-ball-capped carousel pole. The horse is custom painted with a crown motif on its chest and the inscription "To M.J. Love E.T." painted on the saddle.

65 by 58 by 22 1/2 inches

\$600 – 800



961, detail



962, detail



962

962

LOCHMANN'S MUSIK-AUTOMAT AND STAND

Lochmann's Original Musik-Automat 24 1/2-inch disc musical box with "Sublime Harmony" combs and 12 tubular bell accompaniment with arched glazed door and gilt swag decoration below fret corners, flanked by three-quarter columns with matching pediment and coin drawer below. Together with a matching stand with hinged front cabinet and eight 24 1/2-inch disc storage compartments. Eight discs present.

57 by 17 by 32 inches; stand, 37 by 34 by 19 inches

\$7,000 – 9,000



962



963



964

963

CHEF STATUETTE

Molded resin figure of a chef on base holding a menu board.

31 by 19 by 10 inches

\$40 – 60

964

CHEF STATUETTE

Freestanding, painted resin statuette of a chef with arms posed to hold a menu board.

24 by 8 by 5 inches

\$50 – 75

965

MENU BOARD

Hand-painted, three-dimensional wooden menu display board.

24 1/2 by 24 inches

\$60 – 80



965



966

966
LIFE-SIZE CHEF

Molded rubber life-size figure of a chef wearing black shoes, black and white herringbone pants, chef's jacket, red necktie, and a carrot-form hat.

80 by 26 by 18 inches

\$400 – 600



967

967
LIFE-SIZE BUTLER

Molded rubber life-size figure of a butler. The figure, holding a metal tray, is wearing a tuxedo with black patent leather shoes and white gloves. Figure features glass eyes and a black hat.

67 by 17 by 25 inches

\$400 – 600



968

**968
SCRABBLE PEDESTAL TABLE**

Collector's Edition Scrabble game mounted to pedestal table with two wooden folding chairs featuring the Scrabble logo.

32 by 20 inches

\$80 – 120



969

**969
CONTEMPORARY GLASS CHESS SET**

With colorless and frosted pieces, and an alternating colorless and frosted board. Includes fitted case.

Board, 15 ¾ by 15 ¾ inches

\$200 – 300



970

**970
CHARLIE CHAPLIN SIGN**

Molded resin three-dimensional wall sign of Charlie Chaplin holding a directional sign reading "Toilets."

20 by 28 ½ by 4 ½ inches

\$40 – 60



971



972

971

VINTAGE CHILD'S TRICYCLE

In metal with wooden handles and leather seat.

25 by 25 inches

\$100 – 200

972

MODERN BACKGAMMON TABLE

On four curved tapered legs.

29 ¼ by 31 ½ by 31 ½ inches

200 – 400



973

973

LIFE-SIZE SEATED WOMAN

Life-size seated figure of a woman posed as if she is having tea. Seated on a wooden chair, wearing a grey skirt and sweater with white shirt and brooch. Head and hands made of sculpted fiberglass.

51 by 22 by 22 inches

\$200 – 300



974

974

NSM JUKEBOX

NSM, compact disc jukebox, with phoenix design, circa 2005. Serial number 60451772.

68 by 36 by 29 inches

\$2,000 – 3,000

975

**NEVERLAND LOGO-EMBELLISHED
BEVERAGE-AIR COOLER**

Featuring hand-painted glass double doors and three adjustable shelves. Housed in one of the Neverland train stations.

56 ½ by 37 by 24 inches

\$800 – 1,200

976

**KILBURG GEOCHRON
WORLD CLOCK**

Polished stainless-steel framed Geochron world clock with illuminated map of the world displaying a visual lit and unlit indicator of daylight around the world. The clock displays day and date, time zone, and up-to-the-minute time graphically represented on the world map.

22 ½ by 32 ¼ by 5 inches

\$800 – 1,200



975



976



977



978

977

VINTAGE STYLE POPCORN CART

With red and gold decoration and striped awning. Made by Cretors, Profiteer model, serial number 90104921.

92 by 52 by 68 inches

\$1,000 – 2,000

978

COCA-COLA CLOCK

Battery-operated wall clock in the form of a Coca-Cola bottle cap with painted Coke logo.

16 inches

\$30 – 50

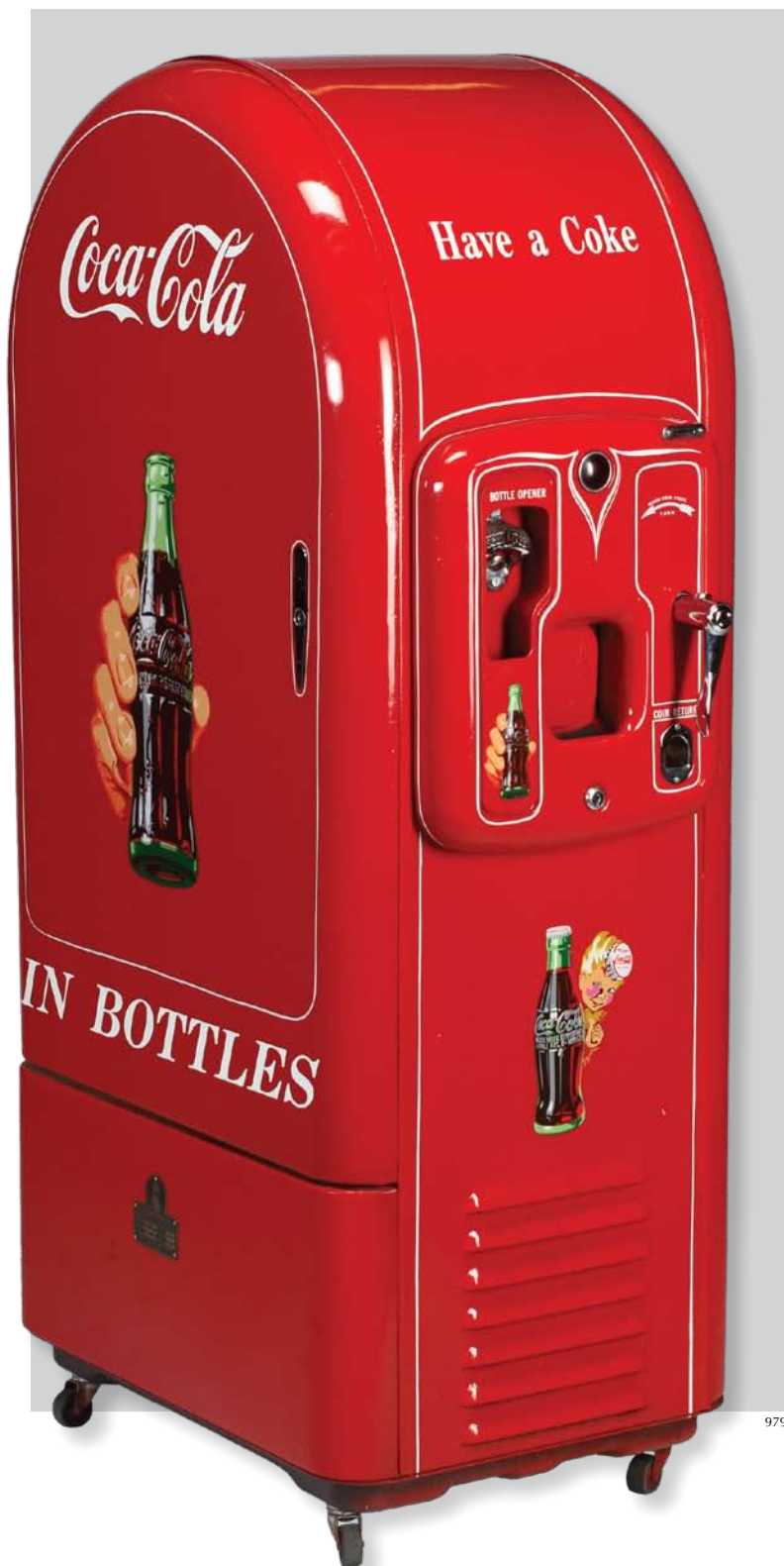
979

JACOBS COCA-COLA MACHINE

Vintage Coca-Cola vending machine dating from the mid-1940s; mailbox style. Jacobs was one of few manufacturers allowed to produce new vending machines during World War II, due to the popularity of caffeinated Coca-Cola with machine plant workers. Plaque on machine reads "F.L. Jacobs Co. Indianapolis, Indiana Model JSC-160 Serial #11141B Phase 1."

56 ½ by 18 by 29 inches

\$800 – 1,200



979



980



980, detail

**980
GREEN JAGUAR JUNIOR E-TYPE
GO-KART**

Seats one, gas powered.

21 by 86 by 31 inches

\$600 – 800



981

**981
RETRO TRICYCLE**

Modern replica of the original 1936 Sky King tricycle by Airflow Collectibles.

26 by 33 by 19 inches

\$100 – 150



982

**982
KID TRAX ELECTRIC RIDE-ON
FIRE ENGINE**

Child's battery-operated electric car in the form of a fire engine with sound effects, working lights, and hand-pump water hose at back.

29 by 52 by 29 inches

\$200 – 300



983

**983
RED PEDAL CAR**

Candy-apple red VW Beetle style children's pedal car with "Junior Sportsters" label on its sides.

18 by 36 by 20 inches

\$40 – 60



984

**984
STREAK-O-LITE COASTER WAGON**

Vintage styling, modern construction.

17 by 64 by 16 inches

\$50 – 100





985

**985
NEVERLAND VALLEY ELECTRIFIED
HORSE-DRAWN CARRIAGE**

Black and red modern carriage labeled on brass plaque "Custom Built by Montana Carriage Company" and inset with a Montana Statehood centennial coin. With CD system, speakers, lights, and custom painted with "Neverland Valley" on both sides.

81 by 130 by 60 inches

\$8,000 – 10,000



986



987

986
TRAFFIC GUARD SIGN

Retro-painted metal sign of a traffic guard holding a sign that reads, "Slow School Zone."

64 by 28 by 20 inches

\$80 – 120

987
PAIR OF ANTHONY BROTHERS TRICYCLES

Pair of machine-age aluminum Convert-O tricycles with solid rubber tread manufactured by Anthony Brothers.

29 1/4 by 20 1/2 by 34 inches

\$100 – 150



988

988
LIFE-SIZE POLICEMAN

Molded rubber life-size figure of a policeman. The figure is wearing navy pants and tie, blue shirt with name tag reading "Nick," and a Los Angeles Police Department hat.

73 by 17 by 14 inches

\$400 – 600



989, detail



989

989

WESTERN GOLF AND COUNTRY CUSTOM CART

Featuring an image of Michael Jackson as Peter Pan painted on the hood by Leon Conaert Jones Jr. and custom Peter Pan cushions. Black with blue interior. Seats two plus jump seat. Electric powered; charger missing.

47 by 111 by 47 inches

\$4,000 – 6,000



990



991

**990
BLACK VIPER MINI-CAR**

Decorated with *The Simpsons* characters.
Seats two.

38 by 128 by 50 inches

\$600 – 800

**991
BLUE PEPSI GO-KART**

With confetti decoration. Open air, gas
powered, seats one.

23 by 73 by 26 inches

\$400 – 600



992

992
NEVERLAND VALLEY
BICYCLE ICE CREAM CART

Featuring elaborate airbrushed decoration with MJJ monogram and Neverland logo. Battery-operated lights, musical bells, and insulated case.

\$4,000 – 6,000



992, detail



993



993



993

**993
SET OF THREE SUZUKI
QUADSPORTS**

Blue and white. Serial numbers
C113-144021, C113-142539, and
C113-141995.

34 by 31 by 57 inches

\$1,800 – 2,200



994



994



994

994

SET OF THREE YAMAHA BADGERS

Various colors. Serial numbers 4EM-057758, 4EM-057758, and 4EM-047827.

34 by 34 by 58 inches

\$1,100 – 1,300



995



996

**995
WESTERN GOLF AND
COUNTRY CART**

Black with green trim, seats two plus jump seat. Electric powered, charger missing.

47 by 111 by 47 inches

\$600 – 800

**996
WESTERN GOLF CART**

Black with covered top and custom audio system. Electric powered, charger missing.

69 by 100 by 44 inches

\$600 – 800



997

997
WESTERN GOLF AND COUNTRY CART

Black, with charger.

40 by 115 by 47 inches

\$600 – 800

998
PAIR OF RACING GO-KARTS

One red, one teal. Each seats one person.
Gas powered.

32 by 37 by 67 inches

\$500 – 700



998



998



999



999

**999
SET OF TWO SUZUKI
QUADRUNNERS**

Teal. Serial numbers G402-141382 and G402-140771.

38 by 42 by 64 inches

\$800 – 950



1000

1000

A 2001 HONDA FOURTRAX 90

Red and black. Serial number
JHSTE18091k604017, TRX90.

35 by 35 by 61 inches

\$700 – 900



1001



1002

**1001
RACING GO-KART**

With red and blue decoration, gas powered.

35 by 103 by 51 inches

\$400 – 600

**1002
RACING GO-KART**

Green and white racing go-kart, gas powered.

35 by 103 by 51 inches

\$400 - 600



1003



1004

**1003
RACING GO-KART**

With white and red decoration, gas powered.

35 by 103 by 51 inches

\$400 – 600

**1004
RACING GO-KART**

With blue and red decoration, gas powered.

35 by 103 by 51 inches

\$400 – 600



1005

REPLICA 1909 DETAMBLE MODEL B ROADSTER

Green two-seater car with crank-start combustion engine. Custom detailing on side panels displaying coat of arms with monogrammed initials "MJJ." Plaque by steering wheel reads "1909 Autocar/Custom Reproduction/Montclair California/PA, Automotive"

60 by 61 by 111 inches

\$4,000 – 6,000





1006



1006, interior

1006
1988 GMC V JIMMY 1/2-TON
HIGH SIERRA CLASSIC

VIN: 1GKEVI8K8JF523787

With all that land out at the ranch, Michael would have needed something like this classic '80s utility vehicle just to get around. This Jimmy is well-equipped with a 350 CID/5.7-liter V-8 engine, automatic transmission, 4-wheel drive, built-in television monitor, car phone, AM/FM radio, air conditioning, removable hardtop, and cloth interior with seating for up to five passengers. Notwithstanding the provenance of this particular Jimmy, they are quickly becoming the next highly collectible utility vehicle, due especially to its lower production numbers in comparison to its General Motors counterpart, the Blazer, and Ford's Bronco.

\$5,000 – 7,000



1007

1007

1993 FORD ECONOLINE E150 VAN

VIN: 1FDEE14HXPFA98281

Ford began producing the Econoline van in 1960. Since that time, Ford has sold well over six million units making it the best-selling full-sized van in America for nearly thirty years. They have accomplished this by offering dependability combined with powerful engines and spacious interiors. This van is equipped with a 351 CID/5.8-liter V-8 engine and automatic transmission, car phone, GPS navigation system, and air conditioning. Television monitors with a video gaming system round out the custom interior, which also includes luxurious leather captain chairs.

\$3,000 – 5,000



1007, interior



1008



1008, detail

1008
1986 GMC HIGH SIERRA 3500
NEVERLAND FIRE TRUCK

VIN: 1GDK34W2G5511444

Neverland Ranch was famous for its amusement park. Always a congenial host, Michael was a stickler when it came to the safety of his guests, making sure that he was prepared for anything. To that end, he had this 1986 GMC High Sierra 3500 Truck converted into a fire truck by Emergency One. It is equipped with a 6-cylinder engine, four-speed automatic transmission and everything needed to handle a fire emergency, from firefighter gear to hoses and ladders. It has been custom painted for its duties at Neverland and is now a wonderful piece of American pop music history.

\$6,000 – 8,000



1009

1009

**2001 HARLEY DAVIDSON
TOURING MOTORCYCLE**

VIN: 1HD1FTW391Y629022

You can never go wrong owning a Harley, especially one coming from the Collection of Michael Jackson! Outfitted as a police bike, complete with lights, this FLHPEI Model has rear-wheel drive and a fuel-injected Big Twin 2-cylinder engine.

\$6,000 – 8,000



1010



1011

**1010
CICLOFAN DELFINO FOUR-
PERSON CARRIAGE CYCLE**

In green and yellow with yellow awning and black leather seats. Made in Italy.

69 by 41 by 103 inches

\$2,000 – 3,000

**1011
BLACK HONDA SANKEI MOPED**

With locking seat compartment. Model number 2279, serial number AF05E-2618119. *Missing side-view mirror.*

39 by 24 by 64 inches

\$800 – 1,200



1012



1012



1012



1013



1013

1012 GROUP OF THREE ELECTRIC E-BIKES

Five gear in black, SX 36-volt model. *No charger. Back wheel protector broken off of two bikes.*

42 by 72 by 6 inches

\$800 – 1,200

1013 PAIR OF ELECTRIC MINI E-BIKES

Five gear in bright yellow, Lee Iacocca model. *Lacking key to battery compartment.*

36 by 57 by 6 inches

\$400 – 600

1014 PASHLEY TRICYCLE WITH TWO CHILD SEATS

Picador five-gear model, in maroon with silver trim, black seat, and white wire basket.

39 by 64 by 27 inches

\$600 – 800



1014



1015



1016

**1015
CINGO SILVER BICYCLE**

With Trussardi tan leather seat and pouches. Damaged tail light and gear shaft.

42 ½ by 67 inches

\$1,000 – 2,000

**1016
SATU-HATI YELLOW-PAINTED
RICKSHAW**

A bicycle-driven carriage with red leather seat, retractable cover, and seating for two people.

60 by 35 by 100 inches

\$800 – 1,200



1017

**1017
LEBMAN WESTERN SADDLE**

Marked "HS Lebman, San Antonio, Texas." A black tooled leather western saddle and stirrups with geometric motifs and six silver conchos, marked "4" on the pommel.

17 by 23 by 24 inches

\$400 – 600



1018

**1018
LEBMAN WESTERN SADDLE**

Marked "HS Lebman, San Antonio, Texas." A black tooled leather western saddle and stirrups with geometric motifs and six silver conchos, marked "1" on the pommel.

15 ½ by 21 by 23 inches

\$400 – 600



1019

**1019
LEBMAN WESTERN SADDLE**

Marked "HS Lebman, San Antonio, Texas." A black tooled leather western saddle and stirrups with geometric motifs and six silver conchos, marked "8" on the pommel.

17 by 23 by 24 inches

\$400 – 600



1020



1021

**1020
ELABORATE BROWN AND BLACK
LEATHER SADDLE**

Featuring engraved sterling mounts, foliate and floral embossing, sterling conchos, and a copper and sterling nameplate marked "Brett."

16 ½ by 23 by 26 inches

\$600 – 800

**1021
BROWN LEATHER DENVER
COLORADO SADDLERY
CHILDREN'S SADDLE**

With tooling on the seat and stirrups and eight leather conchos.

13 by 15 by 18 inches

\$400 – 600

**1022
BROWN LEATHER
WESTERN SADDLE WITH
GOLD EMBROIDERY**

Featuring an upright seat back. *Missing one stirrup.*

17 by 18 by 23 ½ inches

\$300 – 500



1022, detail



1022



1023

1023

LEBMAN WESTERN SADDLE

Marked "HS Lebman, San Antonio, Texas." A black tooled leather western saddle and stirrups with geometric motifs and six silver conchos, marked "2" on the pommel.

17 by 23 by 24 inches

\$400 – 600



1024

1024

LEBMAN WESTERN SADDLE

Marked "HS Lebman, San Antonio, Texas." A black tooled leather western saddle and stirrups with geometric motifs and six silver conchos, marked "3" on the pommel.

17 by 23 by 24 inches

\$400 – 600



1025

1025

LEBMAN WESTERN SADDLE

Marked "HS Lebman, San Antonio, Texas." A black tooled leather western saddle and stirrups with geometric motifs and six silver conchos, marked "7" on the pommel.

17 by 23 by 24 inches

\$400 – 600



1026



1027

**1026
BIG HORN BROWN LEATHER
WESTERN SADDLE**

Tooled with allover elaborate foliate and floral design, with horn stitching in the seat and six silver conchos. Marked "Big Horn" on the stirrup and "921" on the back. Repaired pommel.

15 by 20 by 25 inches

\$400 – 600

**1027
TOOLED BROWN LEATHER
WESTERN SADDLE**

Tooled with allover elaborate foliate and floral design, with horn stitching in the seat and six leather conchos. Marked "P483" on the back.

14 by 15 by 23 inches

\$400 – 600



1028

**1028
WYETH COMPANY BROWN
LEATHER SADDLE**

With tooled decoration, stitching on the seat, and six leather conchos.

14 by 21 by 25 inches

\$400 – 600



1029

1029

LEVI'S STORE DISPLAY

Molded plastic figure of a cowboy holding a saddle on base reading "Levi's America's Finest Overall Since 1850."

29 by 12 by 10 inches

\$50 – 75



1030

1030

VICTORINOX STORE DISPLAY

Large-scale animated Swiss Army knife used as a promotional store display.

27 1/2 by 20 inches

\$300 – 500



1031

1031

VINTAGE STYLE SCOOTER

With three wheels and a pull handle.

14 by 35 by 18 inches

\$100 – 200



CRYSTAL CASTLE
At 100,000
in 1990
CASTLE is made of
crystal.
The model is a
1:100 scale model of
the castle.





1032

**1032
MONUMENTAL MIRROR MODEL
OF FALKENSTEIN CASTLE**

Housed in a wood and glass display case.
With an informational bronze plaque;
maker, Scott DiGiacomo.

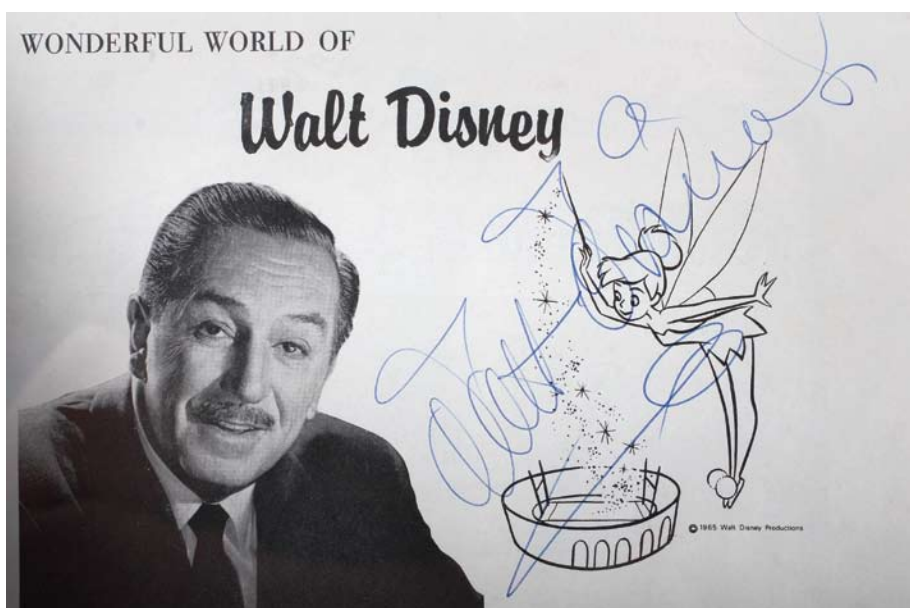
Case, 87 ½ by 43 by 33 inches;
castle, 51 by 34 by 28 inches

\$1,000 – 2,000

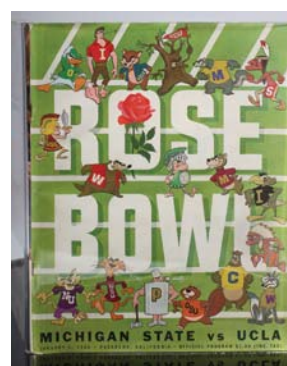




1033



1033, detail



1033, detail

1033 WALT DISNEY SIGNED PROGRAM

A 1966 Rose Bowl program featuring Michigan vs. UCLA. Walt Disney was the Grand Marshal for this event and signed the program next to his photo. The program is housed in a large Plexiglass display case with other photos of Disney.

25 by 33 by 18 inches

\$800 – 1,200



1034

**1034
CERAMIC SORCERER
MICKEY MOUSE**

Large painted ceramic musical figure of Mickey Mouse dressed as the sorcerer from *Fantasia*.

23 by 14 by 10 inches

\$100 – 150



1035

**1035
MINNIE MOUSE**

Vividly colored plastic statuette of Minnie Mouse.

10 by 8 by 6 inches

\$30 – 50



1036

**1036
MICKEY MOUSE STATUE**

Custom Mickey Mouse figure standing 38 inches tall housed in a Plexiglass container on a wooden base. Plaque reads "Mickey Mouse presented to Michael Jackson from the cast of Walt Disney World."

57 ½ by 36 ½ by 26 ½ inches

\$300 – 500



1037

1037
MICKEY MOUSE STATUE
 Painted wood statue of Mickey Mouse extending a gloved hand.
 62 ½ by 36 by 25 inches
 \$300 – 500



1038

1038
GENERAL ELECTRIC MAGIC KINGDOM BEVERAGE COOLER
 Custom painted in two tones of blue with Mickey Mouse and Disneyland logos, with single opening door. Serial number 721473.
 62 by 23 ½ by 21 inches
 \$800 – 1,200



1039

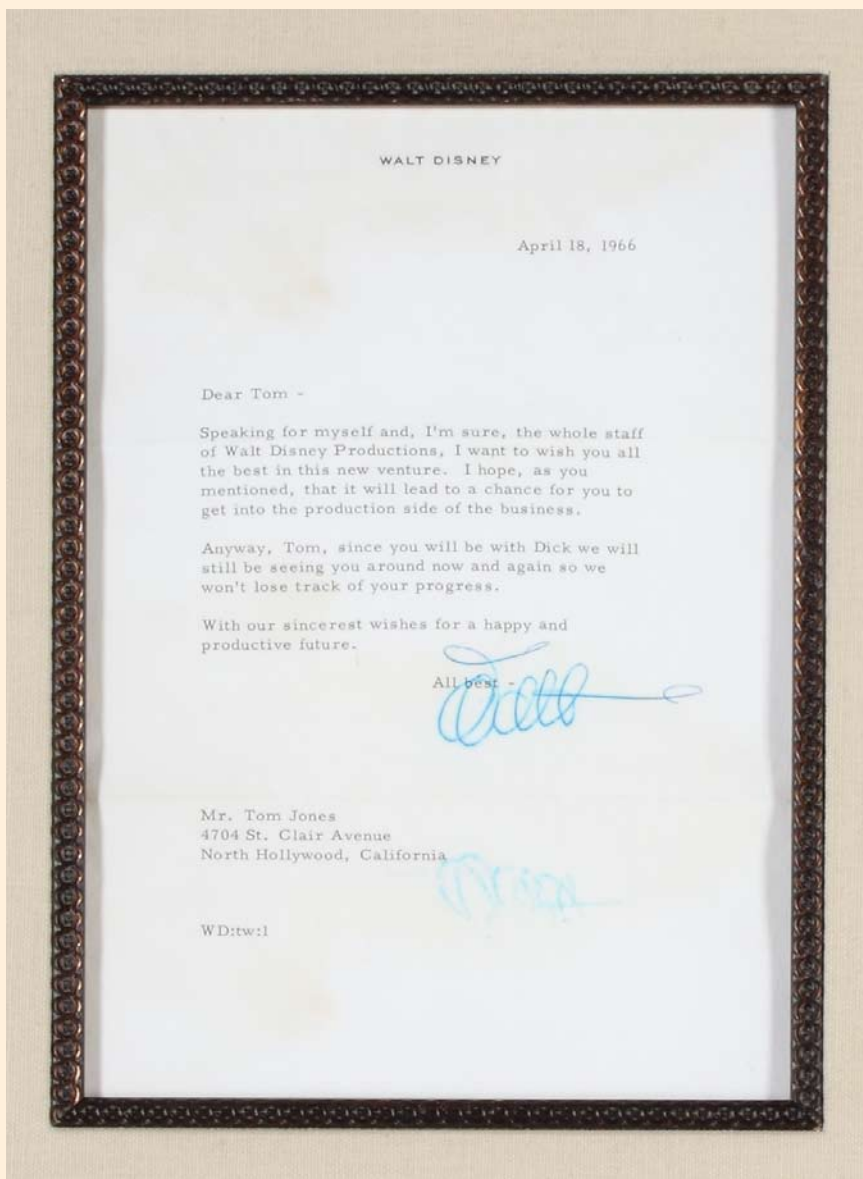
1039

DISNEY LARGE-SCALE DISPLAY

Custom-created display piece featuring two of Mickey Mouse's nephews in period costumes riding a bicycle. The bicycle is mounted to a wooden base with a plaque that reads, "Created Exclusively For Michael Jackson By Walt Disney World Display."

54 by 50 by 23 inches

\$800 – 1,200



1040

"I have such admiration for Mr. Disney and what he accomplished with the help of so many talented artists. When I think about the joy that he and his company have brought to millions of children — and adults — the world over, I am in awe."

Michael Jackson

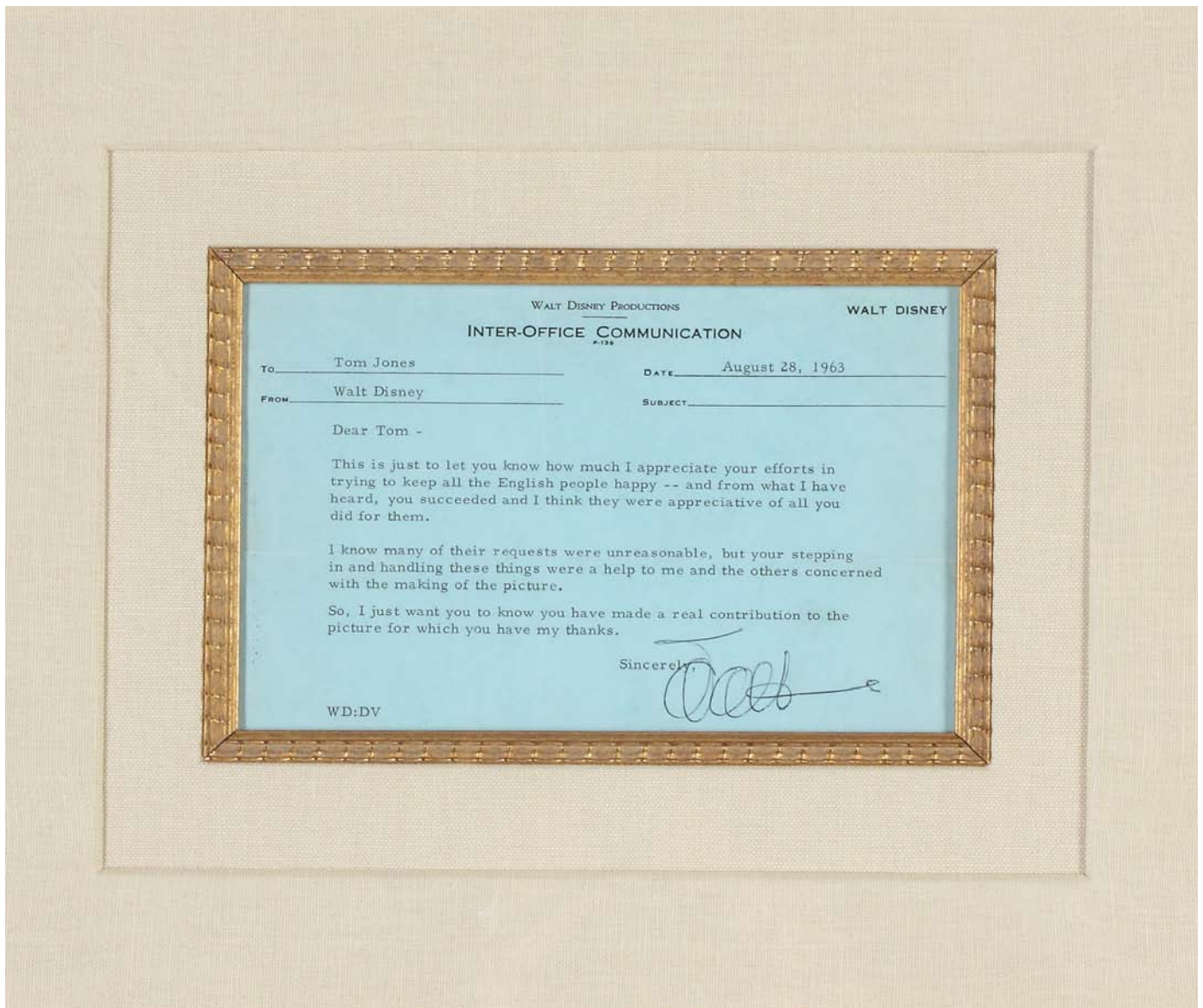
1040

WALT DISNEY LETTER TO TOM JONES

Typed letter signed by Walt Disney in blue marker to Tom Jones, dated April 18, 1966. Framed with original transmittal envelope and flap. Letter reads in full, "Dear Tom Speaking for myself and, I'm sure, the whole staff of Walt Disney Productions, I want to wish you all the best in this new venture. I hope, as you mentioned, that it will lead to a chance for you to get into the production side of the business. Anyway, Tom, since you will be with Dick we will still be seeing you around now and again so we won't lose track of your progress. With our sincerest wishes for a happy and productive future. All best – Walt."

21 by 27 ½ inches including frame

\$800 – 1,200



1041

1041

WALT DISNEY-SIGNED MEMO TO TOM JONES

Interoffice communication dated August 28, 1963, from Walt Disney to Tom Jones, reading in full, "Dear Tom This is just to let you know how much I appreciate your efforts in trying to keep all the English people happy--and from what I have heard, you succeeded and I think they were appreciative of all you did for them. I know many of their requests were unreasonable, but your stepping in and handling these things were a help to me and the others concerned with the making of the picture. So, I just wanted you to know you have made a real contribution to the picture for which you have my thanks. Sincerely Walt Disney." Signed in black ink on blue Walt Disney Productions Inter-Office Communication form.

17 by 19 1/2 inches including frame

\$800 – 1,200



1042, partial



1043

1042

WALT DISNEY SKETCH AND SIGNATURE

Framed presentation display containing a sketch of Donald Duck and large signature by Walt Disney done in brown wax pencil. The drawing is framed together with a photo of Disney and a Donald Duck comic book.

29 by 27 inches

\$1,000 – 1,500

1043

WALT DISNEY BUST

Small cast-metal bust of Walt Disney mounted to stone, marked "Disney" on rock.

10 ½ by 8 ½ by 9 ½ inches

\$50 – 75



1044

1044

SNOW WHITE AND THE SEVEN DWARFS DISPLAY

Large-scale custom display cabinet with carved wooden base, in Plexiglass cover. Case contains detailed figures of Snow White and all seven dwarfs in a nature setting custom-created by the Walt Disney Display team. Plaques on front and back of display case read in full: "Snow White And The Seven Dwarfs Presented To Michael Jackson From The Cast Of Walt Disney World. Created By Walt Disney Display."

71 by 80 by 43 inches

\$1,000 – 1,500



1045

**1045
CAPODIMONTE SNOW WHITE**

Capodimonte sculpture of *Snow White and the Seven Dwarfs* titled "Having Dinner" by Enzo Arzenton, numbered 53/2500.

11 by 20 by 13 inches

\$1,000 – 1,500



1046

1046 **CAPODIMONTE SNOW WHITE**

A 50th Anniversary edition *Snow White and the Seven Dwarfs* sculpture by Enzo Arzenton from the Laurenz Collection. This piece is number 70 in a limited series.

19 by 24 by 15 ½ inches

\$1,000 – 1,500



1047



1048



1049

1047

SNOW WHITE FIGURINES

Complete set of painted ceramic Snow White and the Seven Dwarfs, including duplicates of all dwarfs except Sneezy.

Snow White, 11 inches

\$100 – 150

1048

BAMBI SERICEL

Walt Disney sericel from *Bambi*. Undated screen printing depicting Bambi talking to a group of birds, a Walt Disney seal at lower right, unnumbered, framed, with a certificate of authenticity from the Walt Disney Company. Not examined out of the frame.

17 ½ by 20 ½ inches including frame

\$200 – 300

1049

PINOCCHIO SERICEL

Walt Disney sericel from *Pinocchio*. Undated screen printing depicting Jiminy Cricket standing on a matchbox, a Walt Disney seal at lower right, unnumbered, framed, with a certificate from the Walt Disney Company. Not examined out of the frame.

17 ½ by 20 ½ inches including frame

\$200 – 300



1050

**1050
PINOCCHIO STATUETTE**

Colored resin statuette of Pinocchio talking to Jiminy Cricket perched on his shoe.

16 by 10 by 9 ½ inches

\$40 – 60

**1051
PINOCCHIO LITHOGRAPH**

Commemorative lithograph produced by the Disney Store, 1993, showing Pinocchio on Gepetto's workbench, matted and framed.

18 ½ by 15 inches

\$80 – 120



1051



1052

1052
DISNEY CHARACTER MASKS

Pair of Walt Disney World theme park cast member, operational costume masks for Gepetto and Pinocchio with original tags inside reading "Walt Disney World Lake Buena Vista Florida 12/6/85." The masks are perched on a custom-oak stand.

19 by 30 by 22 inches

\$1,000 – 1,500



1053

**1053
PINOCCHIO MODEL PUPPET**

A custom, fully articulated, eight-string Pinocchio puppet model standing 40 inches. Housed in a Plexiglass container.

60 by 21 by 27 1/2 inches

\$400 – 600



1054

**1054
PINOCCHIO
LARGE-SCALE DISPLAY**

Felt Gepetto doll holding an articulated Pinocchio puppet on a custom-oak pedestal with a glass cover.

Case, 59 1/2 by 24 by 24 inches

\$400 – 600



1055



1056

1055

MICKEY MOUSE WALL PANEL

Super-large-scale Mickey Mouse wall display made of carpet panels fitted with extensive fiber-optic lighting to create an illuminated effect around Mickey. The piece is presented in a contained wooden shadow-box style frame.

100 by 73 by 11 ½ inches including frame

\$1,000 – 1,500

1056

DISNEY ART PRINT

Signed limited and numbered edition artist proof of a Disney-themed 3-D graphic print. The piece is personalized on the door of Goofy's convertible which reads "V.I.P. Prince Michael Jackson." The piece is signed by the artist in the lower right, "Charles Fazzino," and numbered in the lower left, "61/100AP."

40 by 47 inches

\$200 – 300



1057

1057

**WALT DISNEY
SLEEPING BEAUTY SERICEL**

Silkscreen print depicting Briar Rose in limited edition of 2600. Dated 1990, with certificate of authenticity.

16 by 19 inches including frame

\$100 – 200



1058

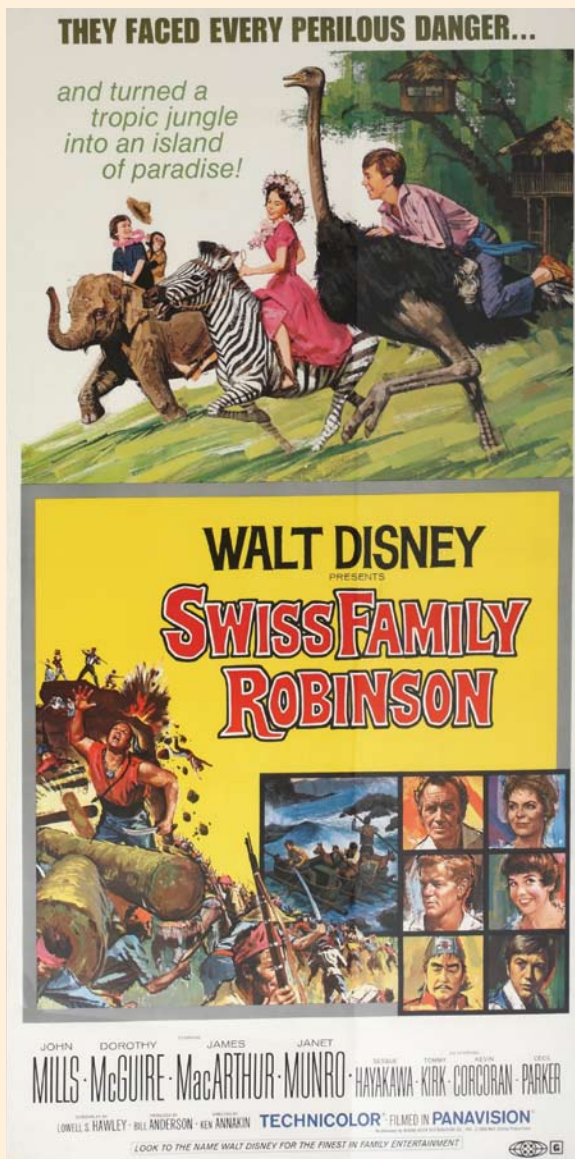
1058

ALICE IN WONDERLAND

Disney, 1951, (*Alice au Pays des Merveilles*) French one panel poster, condition A-, framed.

63 by 47 inches

\$80 – 120



1059

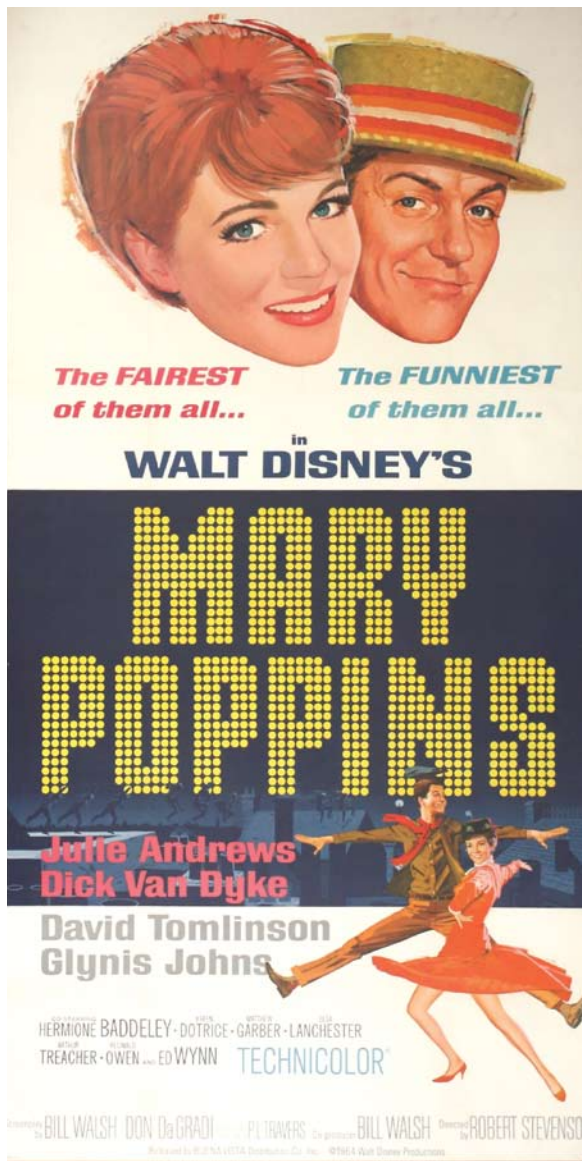
1059

SWISS FAMILY ROBINSON

Disney, 1960, three sheet, 1969 re-release poster, condition A, framed.

80 by 40 inches

\$50 – 75



1060

1060

MARY POPPINS

Disney, 1964, three sheet, condition A, linen backed, framed.

80 by 40 inches

\$100 – 150



1061

1061

THE ARISTOCATS

Disney, 1970, (*Les Aristochats*) French one panel poster, condition A, framed.

63 by 47 inches

\$50 – 75



1062



1063

1062

LADY AND THE TRAMP

Disney, 1955, three sheet, 1962 re-release poster, condition A, linen backed, framed.

80 by 40 inches

\$100 – 150

1063

MARY POPPINS

Disney, 1964, three sheet, condition A, linen backed, framed.

80 by 40 inches

\$100 – 150



1064

1064

LT. ROBIN CRUSOE, U.S.N.

Disney, 1966, three sheet, condition A, linen backed, framed.

80 by 40 inches

\$50 – 75

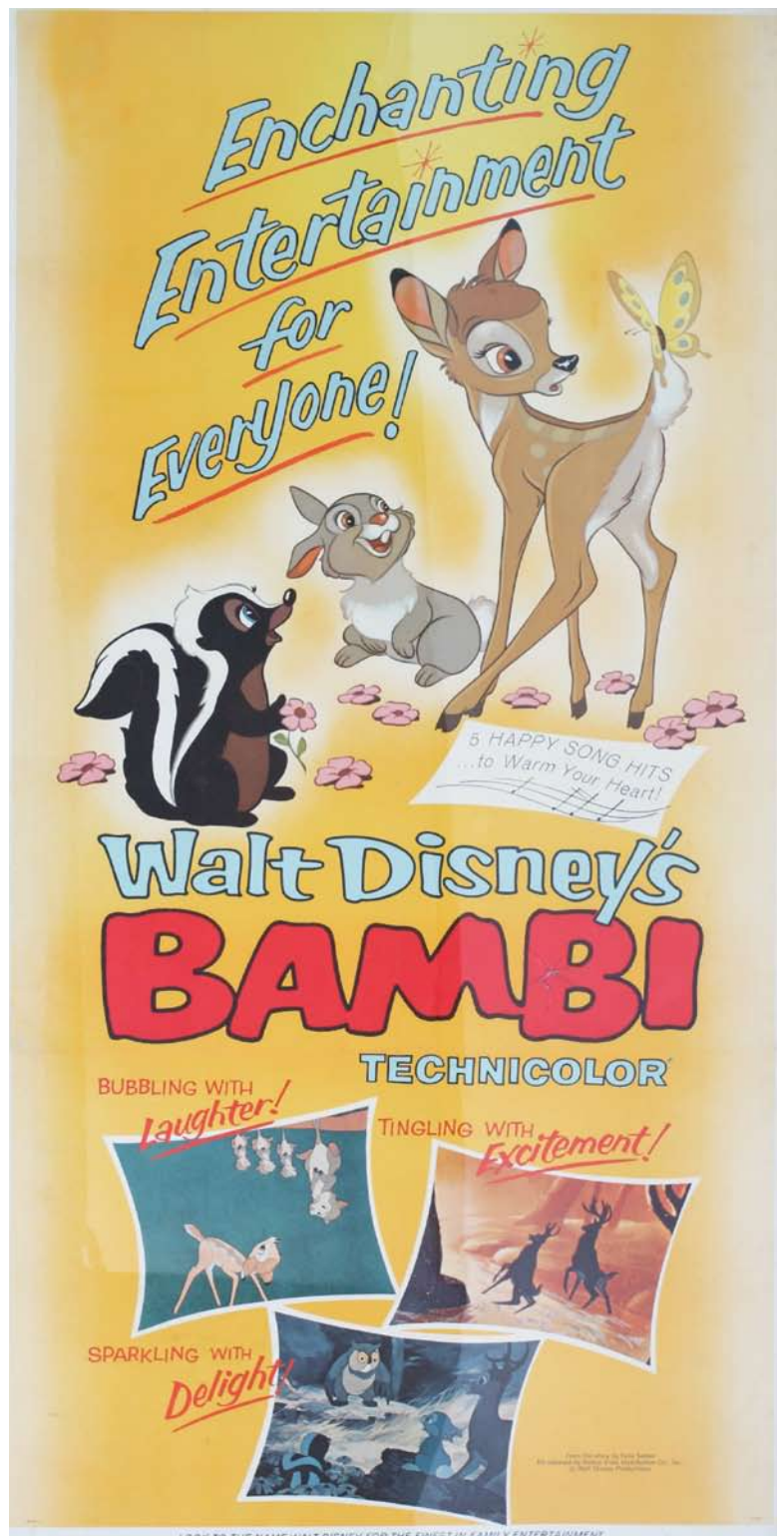
1065

BAMBI

Disney, 1942, three sheet, 1966 re-release poster, condition B, linen backed, framed.

80 by 40 inches

\$80 – 120



1065



1066



1066



1067



1068

1066 PAIR OF PETER PAN MUSICAL GLOBES

Pair of molded resin Peter Pan musical snow globes produced by Disney. The first features an animated Peter Pan flying around Captain Hook's pirate ship to the tune of "You Can Fly! You Can Fly! You Can Fly!" The second features Tinker Bell with a treasure map and treasure.

Pirate ship, 9 by 10 by 6 inches

\$60 – 80

1067 CERAMIC PETER PAN SET

Group of Peter Pan ceramic figurines, including Peter Pan and the window frame to the Darling children's bedroom; Wendy, John, and Michael Darling; the children's bed, and a bust of Captain Hook.

Tallest, 10 by 12 by 8 inches

\$80 – 120

1068 PETER PAN ILLUMINATED DISPLAY

Large-scale shadow-box style, gold-framed display of Peter Pan flying through the air with the Darling children and Tinker Bell. Tinker Bell's trail of pixie dust is illuminated with fiber-optic lighting.

50 by 40 by 9 inches

\$200 – 300



1069

**1069
PETER PAN CHAIR**

Custom chair formed and painted in the likeness of Peter Pan sitting on a tree stump with Tinker Bell hovering around his feet. Inscribed on the back "To Michael/From the family of Love."

47 ½ by 25 by 15 ¼ inches

\$100 – 150



1070

**1070
JOHN DARLING FIGURE**

Life-size molded fiberglass figure of John Darling from *Peter Pan* dressed in his pajama shirt, glasses, and top hat on metal base.

49 by 18 by 23 inches

\$300 – 500



1071

**1071
ALICE IN WONDERLAND
BOOKEND SET**

Pair of identical bookends featuring Alice and the rabbit, together with two battery-operated clocks of the same brushed metal style.

Tallest, 13 ½ inches

\$80 – 100



1072

1072 PETER PAN INSTALLATION

Grouping of Peter Pan figures, including Peter, Captain Hook, and Tinker Bell, created as a custom installation display depicting an angry Hook chasing Peter as Tinker Bell flips the switch on an electrical cord, shocking Hook.

Hook figure, 57 by 34 by 25 inches
\$500 – 700



1073



1074



1075

1073

PETER PAN DISPLAY FIGURE

Painted fiberglass figure of Peter Pan, in three separate pieces, wrestling with his own shadow.

67 by 25 by 22 inches

\$200 – 300

1074

TINKER BELL FIGURINE

Painted ceramic figurine of Tinker Bell with illuminated wings, fitted to a custom wooden base with a glass cover.

17 by 4 inches

\$100 – 150

1075

CAPTAIN HOOK STATUETTE

Molded resin statue of Captain Hook on faux wood base.

27 ½ by 13 ½ by 9 ½ inches

\$100 – 150



1076

1076
PETER PAN

Disney, 1953, (*Le Avventure di Peter Pan*)
Italian one-panel poster, condition A,
framed.

Overall, 63 ½ by 48 inches

\$200 – 300



1077

1077
WALT DISNEY TINKER BELL SERICEL

Silkscreen print depicting Tinker Bell in
limited edition of 2600. Dated 1990, with
certificate of authenticity.

21 ¼ by 18 ¼ inches including frame

\$100 – 200



1078

1078
WALT DISNEY WORLD
PAINTING OF PETER PAN

Oil on canvas, framed with a plaque stating "Peter Pan, created especially for Michael Jackson by Walt Disney World Display."

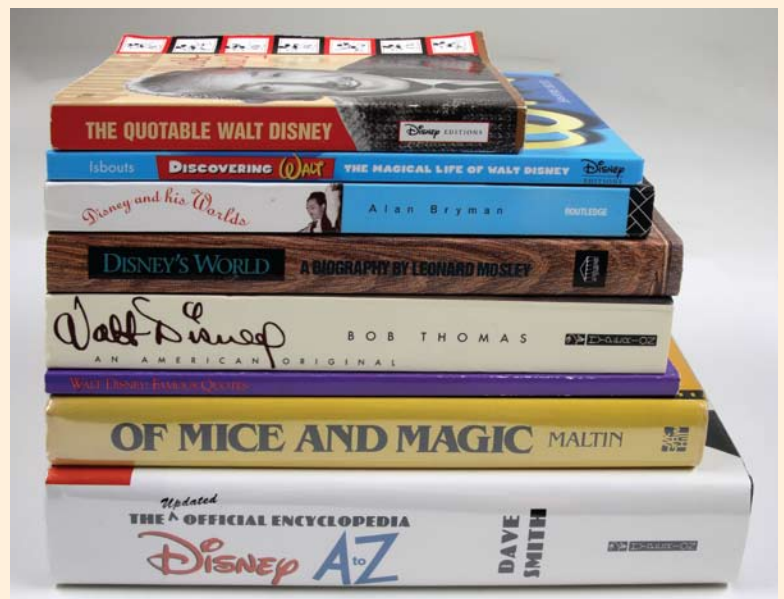
57 ½ by 104 ½ inches including frame

\$3,000 – 5,000

1079
DISNEY AND ANIMATION LIBRARY

Collection of approximately 39 books, predominantly on Walt Disney, his life, work, theme parks, and animation cels, as well as a few related titles.

\$300 – 500



1079, partial



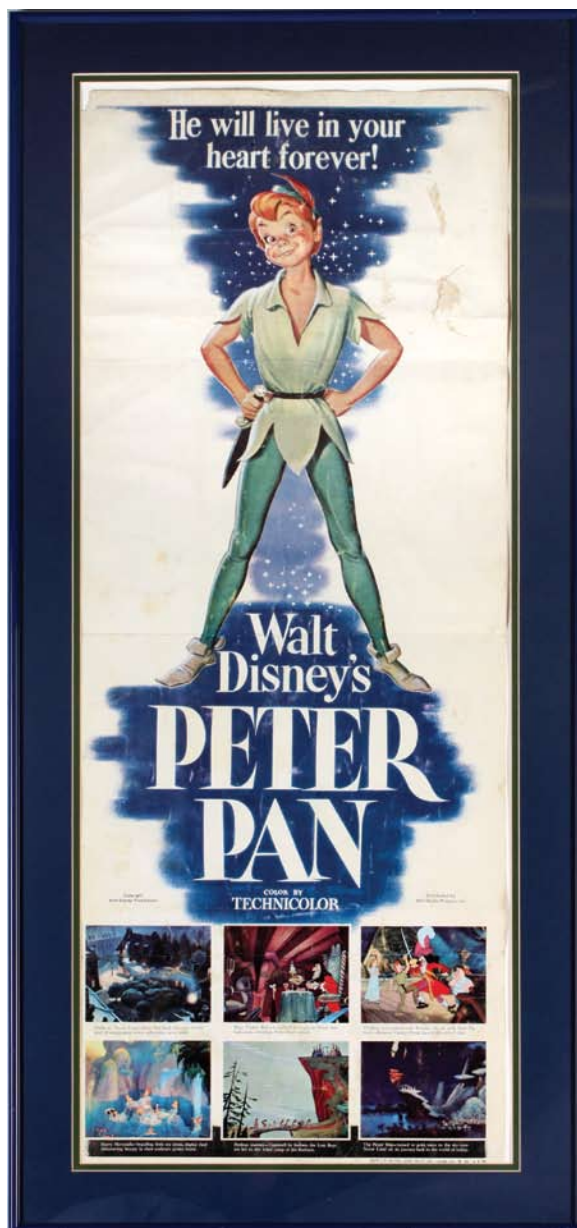
1080

1080
PETER PAN

Disney, 1953, window card. Condition B-, framed, unbacked.

22 by 14 inches

\$100 – 150



1081

1081
PETER PAN

Disney, 1953, insert poster. Condition C, framed, unbacked.

36 by 14 inches

\$100 – 150



1082

1082

PETER PAN ANIMATED DIORAMA

Custom-animated Disney display scene created for Michael Jackson and presented by the Walt Disney World Theme Display team. A freestanding display depicting Peter Pan along with the Darling children flying above their London home, while Nana the dog watches through the window of their bedroom. The scene is presented in a forced perspective view with fiber-optic stars and a bright moon with an illuminated Tinker Bell. The scene plays the song "You Can Fly! You Can Fly! You Can Fly!" on a hidden tape player.

Base, 30 by 62 by 32 inches; top, 64 by 60 by 29 inches

\$1,000 – 1,500



1083



1083, detail

1083

PINOCCHIO ANIMATED DIORAMA

Custom-animated Disney display scene created for Michael Jackson and presented by the Walt Disney World Theme Display team. A molded plastic storybook with a button activates the large-scale scene depicting the workshop of Geppetto with the Blue Fairy waving her wand to animate Pinocchio on the workbench. Her wand animates the cuckoo clocks on the wall of the workshop, as well as a miniature figure of Michael Jackson on a chair in the rear right corner of the shop; the figure performs the moonwalk in a circle on the chair. The scene was originally built into a wall at Neverland Ranch; it is now a freestanding unit lacking the wood panel and frame originally concealing it behind the wall. Scene features music, dialogue, animated figures, and fiber-optic lighting effects.

94 1/2 by 71 by 40 inches

\$1,500 – 2,500



1084

1084

CINDERELLA ANIMATED DIORAMA

Custom-animated Disney display scene created for Michael Jackson and presented by the Walt Disney World Theme Display team. A molded plastic storybook with a button activates the large-scale scene depicting Cinderella and her Fairy Godmother in front of her newly created “pumpkin” carriage as the Fairy Godmother waves her magic wand to turn a group of mice into horses to pull the carriage. A stone pillar to the left of the scene has a plaque reading “Neverland Valley.” The scene was originally built into a wall at Neverland Ranch; it is now a freestanding unit lacking the wood panel and frame originally concealing it behind the wall. Scene features music, dialogue, animated figures, and fiber-optic lighting effects.

94 ½ by 71 by 40 inches

\$1,500 – 2,500

Julien's AUCTIONS

Our sincerest thanks:

the
BEVERLY HILTON®

auction
NETWORK

9900 WILSHIRE
BEVERLY HILLS



NEWBRIDGE
silverware

COBALT  DESIGN

Rebecca Markman
ISA CAPP, AM
Antiques & Fine Art Appraisal Services



Julien's AUCTIONS

THE COLLECTION OF THE KING OF POP: MICHAEL JACKSON

Sale Dates: Wednesday, April 22 – Saturday, April 25, 2009
9900 Wilshire Boulevard, adjacent to the Beverly Hilton, Beverly Hills, California

BIDDER REGISTRATION FORM

Please check ONE of the following: _____ I will be attending the live auction.
_____ I will be bidding online through Auction Network.
_____ I will be placing absentee bids (not including online).
_____ I will be phone bidding.

Please print legibly.

Name: _____ Company: _____

Tax ID number and related state (if applicable): _____

Email: _____

Address: _____

City: _____ State: _____ ZIP: _____

Day Phone: _____ Cell Phone: _____

Fax: _____ Check here if different billing address: _____

Type of Credit Card: _____ Account Number: _____

Expiration Date: _____ Security Code: _____

Billing address if different than above:

Name: _____

Address: _____

City: _____ State: _____ ZIP: _____

Absentee Bid(s) (mark if applicable): _____

Phone Bid(s) (mark if applicable): _____

Lot #: _____ Bid: _____

Lot #: _____ Bid: _____

Lot #: _____ Bid: _____

Lot #: _____ Bid: _____

Lot #: _____ Bid: _____

Lot #: _____ Bid: _____

Lot #: _____ Bid: _____

Lot #: _____ Bid: _____

Lot #: _____ Bid: _____

Lot #: _____ Bid: _____

Lot #: _____ Bid: _____

Lot #: _____ Bid: _____

BIDDER REGISTRATION FORM continued

The Collection of the King of Pop: Michael Jackson

Payments: Julien's Auctions will invoice only for the property (including buyer's premium). Payments for winning lots should be made to Julien's Auctions, P.O. Box 691789, West Hollywood, California 90069. We accept wire transfer, cashiers check or personal check, MasterCard, Visa, American Express and Discover. California and New York residents will be charged sales tax.

Shipping: Buyer pays all shipping costs: Paid items may be picked up onsite at 9900 Wilshire Boulevard, Beverly Hills, California after the auction through Tuesday, April 28, 2009 at no additional costs. Charlie's Moving Company will be available to make local deliveries for a charge of \$95.00 per hour with a 2-hour minimum per job. There is no insurance available for local deliveries. The buyer agrees that Julien's Auctions will not be responsible for shipping and/or insurance of the property after the auction and they will deal directly with Box Brothers for shipping or Charlie at Charlie's Moving Company at 310-386-6046 for local deliveries in Los Angeles. After April 28, Box Brothers will manage all property to be picked up or shipped to the winning bidders. Please contact their representative Ray Nolasco at 800-369-0497, international calls 310-453-1532 or email: ray@boxbrothers.com. Box Brothers will assess a fee of \$45.00 for up to three lots and \$10.00 for each additional lot, for items picked up after April 28 and before May 15, 2009. After May 15, an \$8.00 per day fee PER LOT will be assessed by Box Brothers to cover storage and insurance for items not picked up or shipped prior to that date. Allow 2-12 weeks from receipt of payment for delivery of each lot dependent on destination and mode of shipment. Timescales and charges can be discussed with Box Brothers prior to the sale. Each lot to be shipped fully insured. Box Brothers will not claim a lower value on a lot to avoid customs on international shipments. The buyer is responsible for all fees including duties, taxes, VAT, customs and other charges for lots shipped.

Acknowledgement: I hereby request approval for this registration to bid in this auction sale with Julien's Auctions (the Auctioneer). I acknowledge that I have read, understood and agreed to the Terms and Conditions of the sale as posted on www.juliensauctions.com and printed in the auction catalogue, applicable to the auction sale for which I now register and request the Auctioneer to approve such registration as an authorized participant as a Floor Bidder (Bidder at live event), Absentee Bidder (Bidder by phone, mail, fax, or online) or Online Bidder. I acknowledge and agree that a **20% Buyer's Premium** will be added to the hammer price on individual lots \$50,000 and higher, and a **25% Buyer's Premium** on all individual lots of \$0 - \$49,000 for which I am the successful bidder. In addition, there will be an additional 3% buyer's premium charged for any lots won on www.auctionnetwork.com. I further acknowledge that I am responsible to pay Julien's Auctions the aggregate of the hammer price and the Buyer's Premium for such lot(s). All invoices must be paid within 10 calendar days after the close of the auction. I authorize Julien's Auctions to charge my credit card (3% commission will be added) listed on page 1 for all items purchased (including shipping) at this auction, and any future Julien's Auctions I may participate in, if not otherwise paid in full within 10 calendar days after the close of the auction. In addition, I understand that my credit card will be charged a fee of \$25.00 for my bidder registration in advance of the auction. By signing below I confirm that I have read and agree with all the facts stated in this Acknowledgement and verify all information on page one is correct.

Signature: _____ Date: _____

Print Name: _____

Company (if applicable): _____ Title: _____

Representations, Warranties and Personal Guarantee: I hereby represent and warrant that I am authorized by the above named Company, Person or Entity, as the case may be (the "Customer"), to place bids and to contract on behalf of the Customer for the purchase of the lots in this auction sale and to receive any such lots on behalf of the Customer. I hereby irrevocably and unconditionally personally guarantee and promise to pay Julien's Auctions on demand the full purchase amount and expressly waive protest, presentment, diligence, demand or notice of any kind. I understand that Julien's Auctions will rely upon these representations, warranties and guarantee in registering me to bid and/or extending me credit or other consideration in connection with this auction sale.

Signature: _____ Date: _____

Do not put title

Please fax completed forms to 310-827-2125.

Forms must be received by 12:00 p.m. (Noon) Pacific Standard Time
on the day prior to the auction day in order to be guaranteed.

Julien's Auctions • P.O. Box 691789, West Hollywood, California 90069
Phone 310-836-1818 • Fax 310-827-2125 • Email info@juliensauctions.com

Terms and Conditions of Sale

Julien's Auctions guarantees the authenticity of Attribution of property listed in the catalogue or online as stated in the Terms of Guarantee. Except for the Limited Warranty contained in the terms of guarantee all property is sold "As Is." We make no warranties, nor does the consignor, as to the merchantability or fitness for a particular purpose, the correctness of the catalogue or other description of the physical condition, size, quality, rarity, importance, medium, provenance, exhibitions, literature or historical relevance of any property. No oral or written statements made in the catalogue, online listing, advertisement, bill of sale, and announcement or elsewhere made by employees (including affiliated and related companies) shall be considered a warranty. We and the Consignor make no representations and warranties, express or implied, as to whether the purchaser acquires any copyrights, including but not limited to, any reproduction rights of any property. We and the Consignor are not responsible for errors and omissions in the catalogue, online listings or any other supplemental material.

It is the responsibility of prospective bidders of live auctions to inspect the property before bidding to determine its condition, size, and to determine if it has been repaired or restored.

Acknowledgement: I hereby request approval for this registration to bid in this auction sale with Julien's Auctions (the Auctioneer). I acknowledge that I have read, understood and agreed to the Terms and Conditions of the sale as posted on www.juliensauctions.com and printed in the auction catalogue, applicable to the auction sale for which I now register and request the Auctioneer to approve such registration as an authorized participant as a Floor Bidder (Bidder at live event), Absentee Bidder (Bidder by phone, mail, fax, or online) or Online Bidder. I acknowledge and agree that a **20% Buyer's Premium** will be added to the hammer price on individual lots \$50,000 and higher, and a **25% Buyer's Premium** on all individual lots of \$0 – \$49,000 for which I am the successful bidder. In addition, there will be an additional 3% buyer's premium charged for any lots won on www.auctionnetwork.com. I further acknowledge that I am responsible to pay Julien's Auctions the aggregate of the hammer price and the Buyer's Premium for such lot(s). All invoices must be paid within 10 calendar days after the close of the auction. I authorize Julien's Auctions to charge my credit card (3% commission will be added) listed on page 1 for all items purchased (including shipping) at this auction, and any future Julien's Auctions I may participate in, if not otherwise paid in full within 10 calendar days after the close of the auction. In addition, I understand that my credit card will be charged a fee of \$25.00 for my bidder registration in advance of the auction. By signing below I confirm that I have read and agree with all the facts stated in this Acknowledgement and verify all information on page one is correct.

Payments: Julien's Auctions will invoice only for the property (including buyer's premium). Payments for winning lots should be made to Julien's Auctions, P.O. Box 691789, West Hollywood, California 90069. We accept wire transfer, cashier's check or personal check, MasterCard, Visa, American Express and Discover. Please note that Julien's will assess a 3% commission for all credit card payments. California and New York residents will be charged sales tax.

Shipping: Buyer pays all shipping costs: Paid items may be picked up onsite at 9900 Wilshire Boulevard, Beverly Hills, California after the auction through Tuesday, April 28, 2009 at no additional costs. Charlie's Moving Company will be available to make local deliveries for a charge of \$95.00 per hour with a 2 hour minimum per job. There is no insurance available for local deliveries. The buyer agrees that Julien's Auctions will not be responsible for shipping and/or insurance of the property after the auction and they will deal directly with Box Brothers for shipping or Charlie at Charlie's Moving Company at 310-386-6046 for local deliveries in Los Angeles.

After April 28, Box Brothers will manage all property to be picked up or shipped to the winning bidders. Please contact their representative Ray Nolasco at 800-369-0497, international calls 310-453-1532 or email: ray@boxbros.com. Box Brothers will assess a fee of \$45.00 for up to three lots and \$10.00 for each additional lot, for items picked up after April 28 and before May 15, 2009. After May 15, an \$8.00 per day fee PER LOT will be assessed by Box Brothers to

cover storage and insurance for items not picked up or shipped prior to that date. Allow 2–12 weeks from receipt of payment for delivery of each lot dependent on destination and mode of shipment. Timescales and charges can be discussed with Box Brothers prior to the sale. Each lot to be shipped fully insured. Box Brothers will not claim a lower value on a lot to avoid customs on international shipments. The buyer is responsible for all fees including duties, taxes, VAT, customs and other charges for lots shipped.

Bids will not be accepted from those persons under the age of eighteen (18) without written consent of said persons parent or legal guardian. Written consent must acknowledge the terms and conditions of sale. This written consent constitutes an agreement to be bound thereby on behalf of the bidder.

Bidder registration is required for all persons wishing to bid live and online for Julien's Auctions. Any person registering for the auction in person or online will complete a registration or bid sheet.

All items are offered subject to a reserve. The reserve is the confidential minimum price acceptable to the Consignor. During a live auction the auctioneer may open any lot by bidding on behalf of the Consignor and may bid up to the amount of the reserve, by placing successive or consecutive bids for a lot or bids in response to other bidders. Online sales may do the same by employing the use of a starting bid which will commence bidding at or below the reserve price agreed to by the Consignor.

Julien's reserves the right to withdraw any property before the sale and will have no liability for doing so.

We reserve the right to accept or decline any bid. Bids must be for an entire lot and each lot constitutes a separate sale. All bids are per lot unless otherwise announced at a live sale by the auctioneer. Live auction lots will be sold in their numbered sequence unless the Auctioneer directs otherwise. It is unlawful and illegal for Bidders to collude, pool, or agree with another Bidder to pay less than the fair value for lot(s). Bidders participating in both live and online auctions acknowledge that the law provides for substantial penalties in the form of treble damages and attorneys' fees and costs for those who violate these provisions. For live auctions the auctioneer will have final discretion in the event that any dispute should arise between bidders. The auctioneer will determine the successful bidder, cancel the sale, or re-offer and resell the lot or lots in dispute. Julien's will have final discretion to resolve any disputes arising after the sale and in online auctions. If any dispute arises our sale record is conclusive. Julien's will execute order or absentee bids, and accept telephone bids as a courtesy to clients who are unable to attend the live auctions. Therefore we take no responsibility for any errors or omissions in connection with this service.

Subject to fulfillment of all of the conditions set forth herein, on the fall of the auctioneer's hammer, title to the offered lot will pass to the highest bidder acknowledged by the auctioneer, and such bidder thereupon (a) assumes full risk and responsibility (including without limitation, liability for or damage to frames or glass covering prints, paintings, photos, or other works), and (b) will immediately pay the full purchase price or such part as we may require. In addition to other remedies available to us by law, we reserve the right to impose from the date of sale a late charge of 1½% per month of the total purchase price if payment is not made in accordance with the conditions set forth herein. All property must be removed from either our premises by the purchaser at his expense not later than 10 business days following its sale and if it is not so removed, (i) a handling charge of 1% of the total purchase price per month from the tenth day after the sale until its removal will be payable to us by the purchaser, with a minimum of 5% of the total purchase price for any property not so removed within 60 days after the sale, and (ii) we may send the purchased property to a public warehouse for the account, at the risk and expense of the purchaser.

If any applicable conditions herein are not complied with the purchaser will be in default and in addition to any and all other remedies available to us and the Consignor by law, including, without limitation, the right to hold the purchaser liable for the total purchase price, including all fees, charges and expenses more fully set forth herein, we, at our option, may (a) cancel the sale of that, or any other lots sold to the defaulting purchaser at the same or any other auction, retaining as liquidated damages all payments made by the purchaser,

or (b) resell the purchased property, whether at public auction or by private sale, or (c) effect any combination thereof. In any case, the purchaser will be liable for any deficiency, any and all costs, handling charges, late charges, expenses of both sales, our commissions on both sales at our regular rates, legal fees and expenses, collection fees and incidental damages. We may, in our sole discretion, apply any proceeds of sale then due or thereafter becoming due to the purchaser from us or any affiliated company, or any payment made by the purchaser to us or any affiliated company, where or not intended to reduce the purchaser's obligations with respect to the unpaid lot or lots, to the deficiency and any other amounts due to us or any affiliated companies. In addition, a defaulting purchaser will be deemed to have granted and assigned to us and our affiliated companies, a continuing security interest of first priority in any property or money of our owing to such purchaser in our possession or in the possession of any of our affiliated companies, and we may retain and apply such property or money as collateral security for the obligations due to us or to any affiliated company of ours. Payment will not be deemed to have been made in full until we have collected good funds. In the event the purchaser fails to pay any or all of the total purchase price for any lot and Julien's elects to pay the Consignor any portion of the sale proceeds, the purchaser acknowledges that Julien's shall have all of the rights of the Consignor to pursue the purchaser for any amounts paid to the consignor, whether at law, in equity, or under these Conditions of Sale.

Under no circumstance will Julien's incur liability to a purchaser in excess of the purchase price actually paid.

The terms and conditions of sale herein described shall be enforced in accordance with, and governed by the laws of the State of California. Bidder acknowledges and agrees that the courts of the state of California shall have exclusive jurisdiction over any dispute(s). Bidder (in person, by agent, order bid, telephone, internet or by other means) agrees that any dispute arising shall be litigated exclusively in the courts of the State of California. Further, venue shall be in the Superior Court of Los Angeles County, in the state of California.

Terms of Guarantee

"Attribution" is defined by Julien's as the creator, period, culture, source of origin, as the case may be as set forth in the Bold Type Heading of a lot in a live auction catalogue or the lot Title of an online auction, as amended by any oral or written salesroom notices and announcements or online notices and announcements. We make no warranties to information not contained in an online lot heading or information not contained in the Bold Type Heading of any live auction catalogue subject to the exclusions listed below.

Julien's warrants the "Attribution," as defined above and subject to the exclusions listed below, of a lot for a period of five years from the date of sale and only to the original purchaser on record at the auction. If it is determined to our satisfaction that the "Attribution" is incorrect, the sale will be rescinded if the lot is returned to the Julien's Auctions warehouse facility in the same condition in which it was at the time of sale. In order to satisfy Julien's that the "Attribution" of a lot is indeed incorrect we reserve the right to require the purchaser to obtain, at the purchaser's expense, the opinion of two experts in the field, mutually acceptable to Julien's and the purchaser, before we agree to rescind the sale under the warranty. This warranty is not assignable and applies only to the original purchaser on record with Julien's. This warranty does not transfer to any subsequent owners of any purchased property (this includes without limitation, heirs, successors, beneficiaries or assigns).

Should a sale be rescinded and the purchase price paid (final successful bid price, plus the buyer's premium), it is specifically understood that this will be considered the sole remedy. It is exclusive and in lieu of any other remedy available as a matter of law, or in equity.

Exclusions will be made and this warranty does not apply to "Attribution" which on the date of sale was in accordance with the then generally accepted opinion of scholars and specialists, or the identification of periods or dates of execution which may be proven inaccurate by means of scientific processes not generally accepted for use until after publication of the catalogue or listing online, or which were unreasonably expensive or impractical to employ.





Julien's AUCTIONS

P.O. Box 691789, West Hollywood, California 90069

Phone: 310-836-1818 • Fax: 310-827-2125

Email: info@juliensauctions.com

Web: www.juliensauctions.com

www.juliensauctions.co.uk

Above, Lot 1068, Peter Pan Illuminated Display